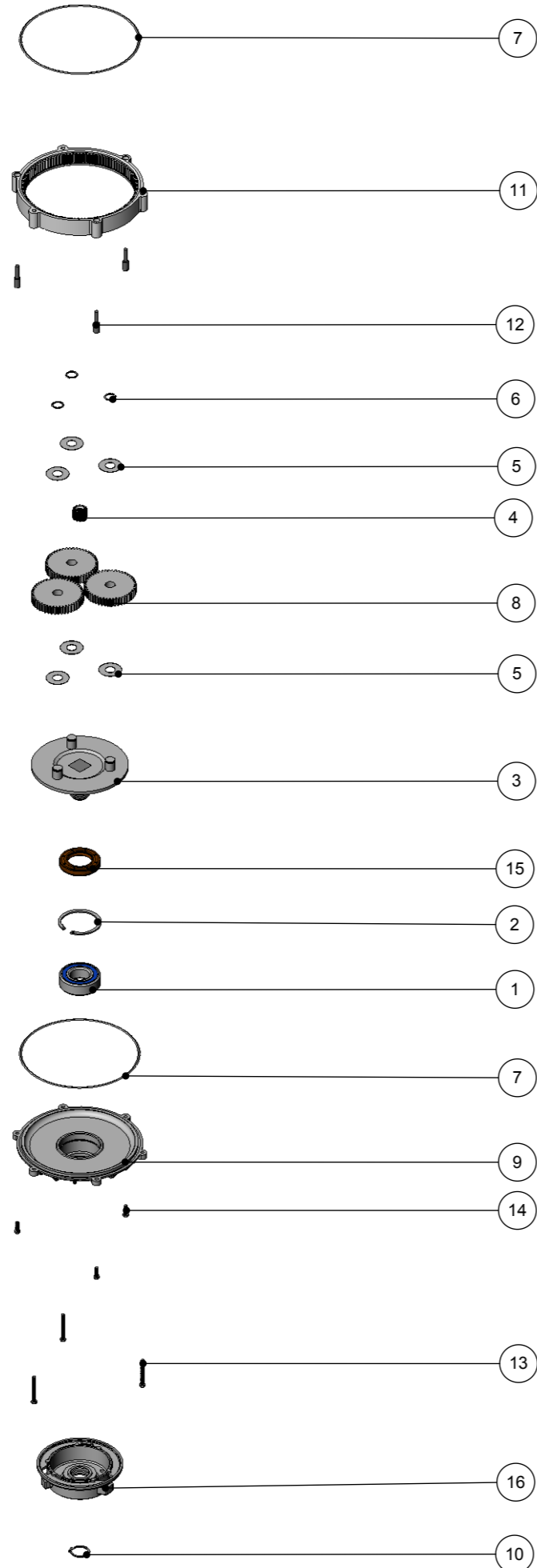


Numatic International Spare Parts

Model No: HFM, NPR & NR RANGE GEARBOX EXPLODED DRAWING (ALL SPEEDS)

233756
DRAWING: DRW-4439 ISS:A04
22/10/13



Numatic International Spare Parts

Model No: HFM, NPR & NR RANGE GEARBOX EXPLODED DRAWING (ALL SPEEDS)

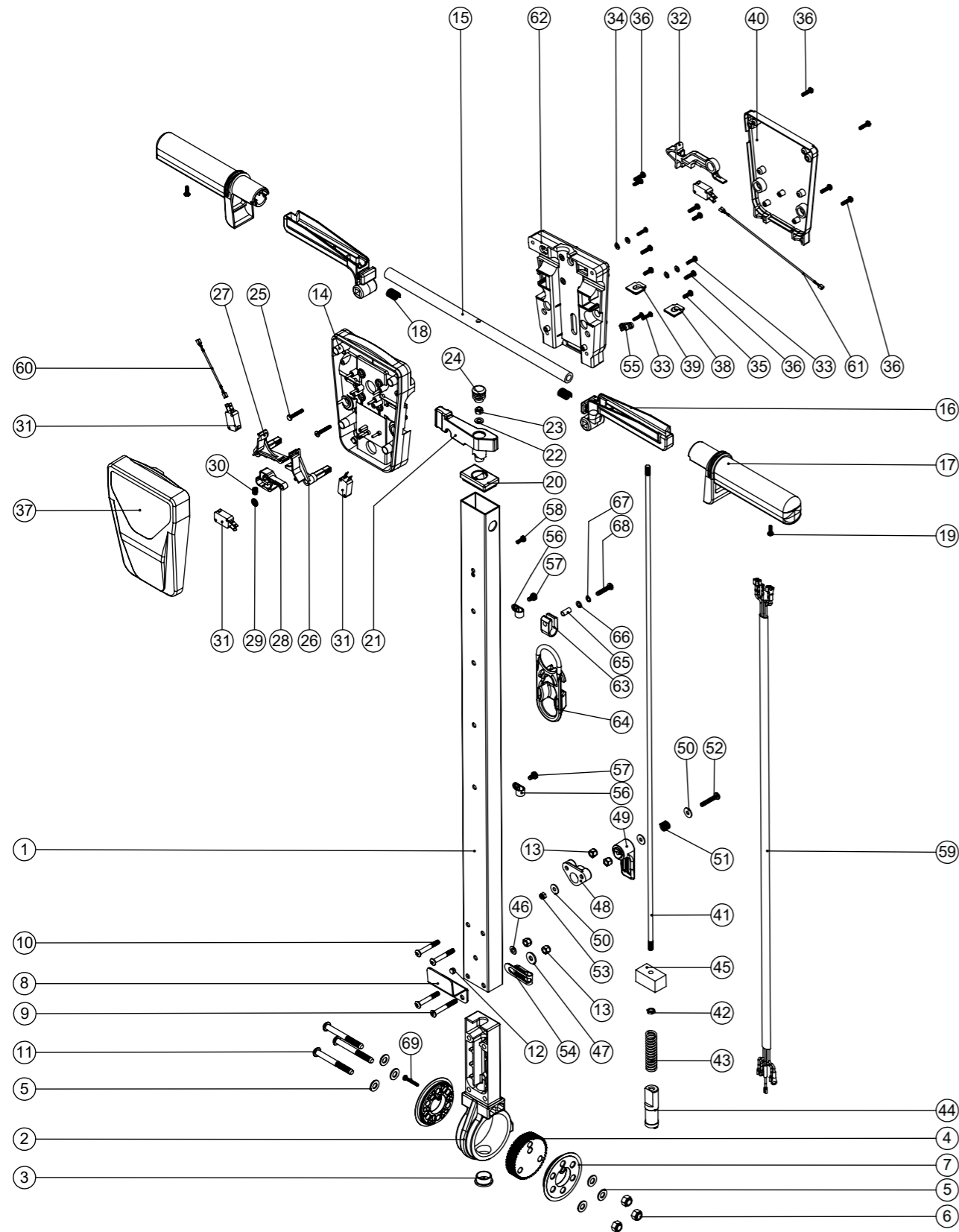
POS:	ITEM NO:	DESCRIPTION:	COMMENTS:
1	230094	62MM O/D X 30MM I/D X 20MM BEARING (WITH SEALS)	
2	230200	62MM INTERNAL CIRCLIP	
3	230291	PLANET CARRIER & PIN ASSEMBLY (50HZ STANDARD SPEED)	HFM/NPR 1515/S & NR 1500S
	230292	PLANET CARRIER & PIN ASSEMBLY (60HZ HIGH SPEED)	HFM/NPR 1523/M, NPR1545/X, NR 1500M & NRS450
	230294	PLANET CARRIER & PIN ASSEMBLY (HIGH SPEED)	HFM/NPR 1530/H & NR1500H
4	230027	12 TOOTH PINION GEAR (STANDARD SPEED)	HFM/NPR 1515/S & NR 1500S
	230025	20 TOOTH PINION GEAR (50HZ MEDIUM/60HZ HIGH SPEED)	HFM/NPR 1523/M, HFM/NPR 1545/X, NR 1500M & NRS450
	230028	24 TOOTH PINION GEAR (HIGH SPEED)	HFM/NPR 1530/H & NR1500H
5	230215	35MM X 15 I/D ALUMINIUM WASHER	
6	230015	15MM EXTERNAL CIRCLIP	
7	230001	V OIL SEAL	
8	230013	48 TOOTH SPUR GEAR(STANDARD SPEED 50/60HZ)	HFM/NPR 1515/S & NR 1500S
	230026	44 TOOTH SPUR GEAR (50HZ MEDIUM/60HZ HIGH SPEED)	HFM/NPR 1523/M, HFM/NPR1545/X, NR 1500M & NRS450
	230014	42 TOOTH SPUR GEAR (HIGH SPEED 50HZ)	HFM/NPR 1530/H & NR1500H
9	230226	DIE CAST BOTTOM PLATE ASSEMBLY	
10	230048	26MM EXTERNAL CIRCLIP	
11	214115	GEAR BOX MID SECTION	
12	208207	GEARBOX FASTENER WITH SLOT	
13	219706	M5 X 45MM LONG STAINLESS STEEL HEXAGONAL BOLT	
14	219904	M5 X16MM LONG HEXAGONAL STAINLESS STEEL BOLT	
15	230158	VITON OIL SEAL (BROWN)	
16	330024	DIE CAST CHUCK MACHINED & PROCESSED	

Numatic International Spare Parts

Model No: NR HANDLE ASSEMBLY EXPLODED DRAWING (EXP-0943)

NB: FOR WIRING SEE DRAWING: WD-0345

234514
DRAWING: EXP-0943 ISS:A17
25/03/2020



Numatic International Spare Parts

Model No: NR HANDLE ASSEMBLY EXPLODED DRAWING (EXP-0943)

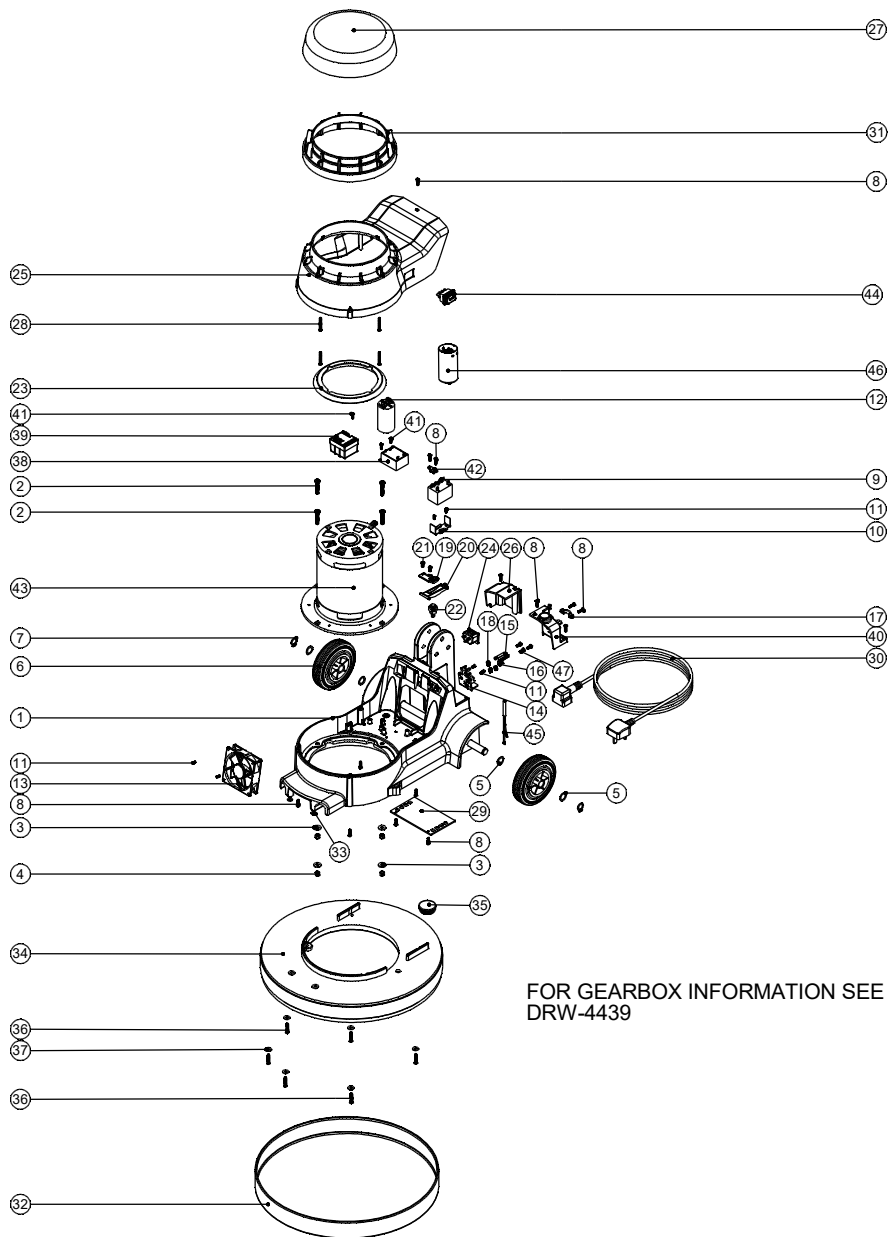
ITEM:	PART No:	DESCRIPTION	COMMENTS	QTY.
1	429096	LOLINE HANDLE TUBE PAINTED (830)		1
2	900398	HANDLE CASTING MACHINED (HNS VERSION)		1
3	229099	25MM DIA HOLE PLUG		1
4	900397	MINI ADJUSTMENT GEAR		1
5	219010	M8 FORM A WASHER		6
6	219078	NUT.M8.NYLON INSERT.Z/PL		3
7	900396	ADJUSTMENT GEAR SPACER		2
8	329000	HANDLE BRACKET		1
9	219881	M6 X 45MM SOCKET BUTTON HEAD SCREW		1
10	219807	M6 X 40MM LONG SOCKET BUTTON HEAD BOLT		3
11	219806	M8 X 70MM LONG SOCKET BUTTON HEAD BOLT		3
12	229009	BLANKING PLUG		1
13	219088	M6 NYLON INSERT NUT		4
14	227576	FRONT INNER HALF MOULDING		1
15	338269	CROSS TUBE		1
16	227581	TRIGGER MOULDING (GREY)	RED VERSION 903547	2
17	227580	HAND GRIP MOULDING		2
18	219803	TRIGGER COMPRESSION SPRING		2
19	219270	No8 X 1/2 INCH LONG POZI PAN SELF TAP SCREW		2
20	227582	HANDLE PLUG MOULDING	RED VERSION 903546	1
21	227583	ADJUSTMENT LEVER MOULDING	RED VERSION 903545	1
22	219493	M6 NYLON WASHER		1
23	219642	M6 STAINLESS STEEL NYLON INSERT NUT		1
24	20638V	19MM BLACK TUBE END STOP		1
25	219811	NO8 X 1 INCH LONG POZI-PAN SELF TAP SCREW		2
26	227585	LEFT HAND SWITCH OPERATING LEVER MOULDING		1
27	227586	RIGHT HAND SWITCH OPERATING LEVER MOULDING		1
28	227587	CENTRE SWITCH OPERATING LEVER MOULDING		1
29	219805	4MM SPIREFIX		1
30	219804	SWITCH COMPRESSION SPRING		1
31	229483	SNAP ACTION SWITCH		4
32	227584	INTERLOCK LEVER MOULDING		1
33	219107	NO6.5/8 INCH LG.POZI-PAN.SCREW.Z/PL.PLASTITE		4
34	219206	M4 FORM A WASHER		4
35	219569	No8 X 1/2 INCH LONG POZI PAN STAINLESS STEEL PLASTITE SCREW		4
36	219105	No8 X 5/8 INCH LONG POZI PAN PLASTITE SCREW		8
37	318959	PRINTED FRONT COVER MOULDING		1
38	329539	MODIFIED BLANKING PLATE		1
39	227666	BLANKING PLUG		1
40	318968	PRINTED REAR COVER MOULDING		1
41	229484	840MM HANDLE LOCKING ROD		1
42	219099	M6 HALF NUT		1
43	229138	SPRING		1
44	229073	GEAR LOCKING PIN		1
45	229030	ANTI VIBRATION PAD		1
46	219007	M6 FORM B WASHER		1
47	219008	M6 FORM G WASHER		1
48	227806	CABLE RELEASE BASE MOULDING	RED VERSION 903882	1
49	227807	CABLE RELEASE TOP MOULDING	RED VERSION 903883	1
50	219644	M5 FORM G STAINLESS STEEL WASHER		3
51	206599	SPRING (REF:C5514370)		1
52	219720	M5 X 30MM LONG STAINLESS STEEL POZI PAN SCREW		1
53	219076	M5 NYLON INSERT NUT		1
54	229139	P-CLIP		1
55	229669	LOLINE HANDLE CABLE CLAMP		1
56	219393	P CLIP		2
57	219047	M5 X 10MM LONG POZI PAN SEMS SCREW		2
58	219471	M4 X 12MM LONG POZI PAN SEMS SCREW		1
59	230134	NR 5 CORE LOOM ASSEMBLY (UK/EURO)		1
60	321247	60MM LONG BLUE LINK WIRE		1
61	321248	190MM LONG BLUE LINK WIRE		1
62	229509	REAR INNER HALF MOULDING (FR)		1
63	219743	CABLE CLEAT		1
64	902312	CABLE STRESS RELIEF		1
65	903192	SPIROL SPACER SP100 5MM NOM ID x 14MM		1
66	219355	M5 FORM A STAINLESS STEEL WASHER		1
67	219016	M5 SHAKEPROOF WASHER		1
68	219575	M5 X 25MM LONG POZI PAN STAINLESS STEEL SCREW		1
69	291150	NO6 X 1 INCH LONG POZI PAN SCREW S/S		1

Numatic International Spare Parts

Model No: NRT 1530 BASE ASSEMBLY EXPLODED DRAWING (EXP-0923)

NB: FOR WIRING SEE DRAWING: WD-0348

234492
DRAWING: EXP-0923 ISS:A17
26/03/2020



FOR GEARBOX INFORMATION SEE
DRW-4439

Numatic International Spare Parts

Model No: NRT 1530 BASE ASSEMBLY EXPLODED DRAWING (EXP-0923)

POS:	ITEM NO:	DESCRIPTION:	COMMENTS:
1	338580	PRINTED GRAPHITE BASE MOULDING SUB ASSEMBLY C/W M8 MULTISERT	
2	219268	M6 X 35MM LONG POZI PAN SCREW	
3	219008	M6 FORM G WASHER	
4	219088	M6 NYLON INSERT NUT	
5	219219	21.5MM X 16.3MM WAVE WASHER	
6	229060	WHEEL GREY BLACK HUB	
7	229051	EXTERNAL CIRCLIP	
8	219914	NO6 X 5/8 INCH LONG POZI-PAN PLASTITE STAINLESS STEEL SCREW	
9	206575	240V / 25A RELAY	
10	206500	RELAY BRACKET	
11	219651	M4 X 10MM LONG POZI PAN THREAD CUTTING SCREW	
12	220876	20 MFD MOTOR RUN CAPACITOR (450V)	
13	205072	PROCESSED 12V DC BRUSHLESS FAN	
14	216288	TERMINAL BLOCK	
15	206562	CONTACT PIN	
16	206563	EARTH CONTACT PIN	
17	216290	CABLE CLAMP 16A PLUGGED	
18	219009	M4 BRASS TAPPEX INSERT	
19	216293	LEVER PLATE	
20	216292	CUT OUT LEVER	
21	219677	No4 X 10MM LONG POZI PAN PLASTITE SCREW	
22	229454	HANDLE SWITCH	
23	227556	TOP MOTOR GASKET	
24	220964	APPLIANCE OUTPUT SOCKET	
25	303517	MODIFIED FLOOR MACHINE MIDDLE SECTION MOULDING	
26	216291	OUTPUT COVER	
27	328112	NU SPEED TOP SECTION MOULDING PRINTED	
28	219848	NO6 X 1 3/8 INCH LONG POZI PAN SCREW	
29	329228	GAURD PLATE	
	236136	15.0MT X 1.5MM X 3 CORE YELLOW CABLE (SOCKET + PLUG) EURO	OPTIONAL CABLE
	236087	MAINS CABLE (15.0 METERS / 1.5MM / 3 CORE CABLE / SOCKET + AUSTRALIAN PLUG)	OPTIONAL CABLE
	236078	MAINS CABLE (15.0 METERS / 1.5MM / 3 CORE CABLE / SOCKET + SWISS PLUG)	OPTIONAL CABLE
	236081	MAINS CABLE (15.0 METERS / 1.5MM / 3 CORE CABLE / SOCKET + SOUTH AFRICAN PLUG)	OPTIONAL CABLE
	236072	MAINS CABLE (15.0 METERS / 1.5MM / 3 CORE CABLE / SOCKET + UK PLUG)	OPTIONAL CABLE
30	236072	MAINS CABLE (15.0 METERS / 1.5MM / 3 CORE CABLE / SOCKET + UK PLUG)	
32	206478	GREY MEDIUM BUFFER RING	
31	229486	TALL MOTOR INSERT MOULDING	
33	219493	M6 NYLON WASHER	
34	329110	GREY SANDING DECK	
35	229400	BLACK END STOP	
36	219369	No8 X 1 INCH LONG POZI PAN STAINLESS STEEL PLASTITE SCREW	
37	219644	M5 FORM G STAINLESS STEEL WASHER	
38	206753	UNIVERSAL POWER SUPPLY	
39	208582	230V SINGLE SPEED VOLTAGE RELAY (1000W)	
40	206865	16A INPUT COVER C/W WINDOW PLUG	
41	219318	No6 X 1/2 INCH LONG POZI PAN PLASTITE SCREW (Z/PL)	
44	229465	DOUBLE POLE CHANGE OVER RED ROCKER SWITCH	
42	229669	LOLINE HANDLE CABLE CLAMP	
43	205223	COMBINED INDUCTION MOTOR 2/4POLE 220-240V 50Hz	
45	321193	AC LED WITH TERMINALS	
46	208265	MOTOR START CAPACITOR 98 MFD	
47	219471	M4 X 12MM LONG POZI PAN SEMS SCREW	

NRT (2 Speed) 230V (Floor Machine)

WD-348 (A07) 21.09.11

