

skyVac[®] Harness

USER MANUAL



www.skyvac.com

INNOVATION FOR A FASTER, SAFER FUTURE

skyVac[®] Harness

BODY HARNESS TO REDUCE WEIGHT OF POLE(S) AND END TOOLS

PRE-ASSEMBLED SKYVAC HARNESS



INCLUDED AS STANDARD



1 X STRAP



2 X HIP BELT EXTENSION

SPECIFICATION

Weight:	4.8kg
Dimensions (cm):	115 x 35 x 70
Material construction:	Aluminium & Steel

KEY FEATURES



Adjustable knobs to fit user's body



Retractable pulley system



Strap to hold pole(s)



Adjustable straps to fit user's body



Sturdy and lightweight

Thank you for your purchase



Contents

PACKAGE CONTENT AND SPECIFICATION	2
INTRODUCTION AND UNPACKING AND ASSEMBLY	3
KEY FEATURES	4
SETTING UP	5
ASSEMBLING POLES WITH SKYVAC HARNESS	6
MAINTENANCE AND STORAGE, BEST PRACTICE, AND TROUBLESHOOTING	7

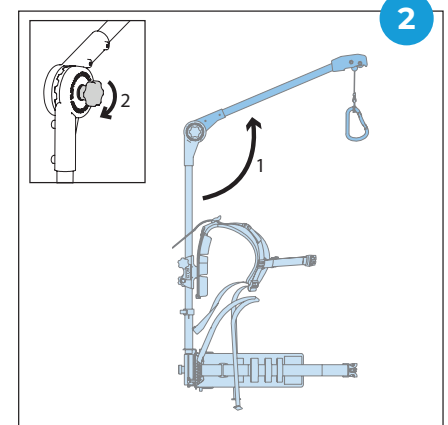
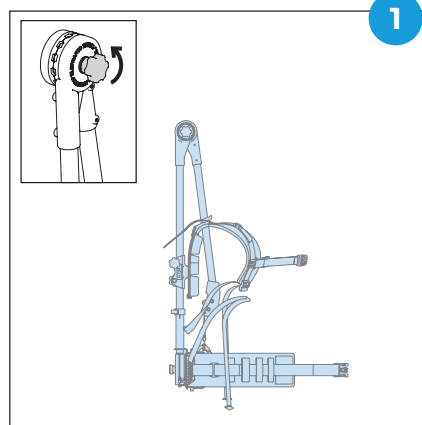
INTRODUCTION

1. The skyVac Harness is an ergonomic harness developed for the use of (pole mounted) tools. The tool (weighing between 1.5kg and 4.5kg) is simply clipped onto the steel cable of the balancer, taking the weight of the tools and transferring it to the whole of your torso.
2. Users are responsible for all damage caused to third party.

UNPACKING AND ASSEMBLY

1. The skyVac Harness comes assembled in package.
2. To use the skyVac Harness put it in the correct working position.

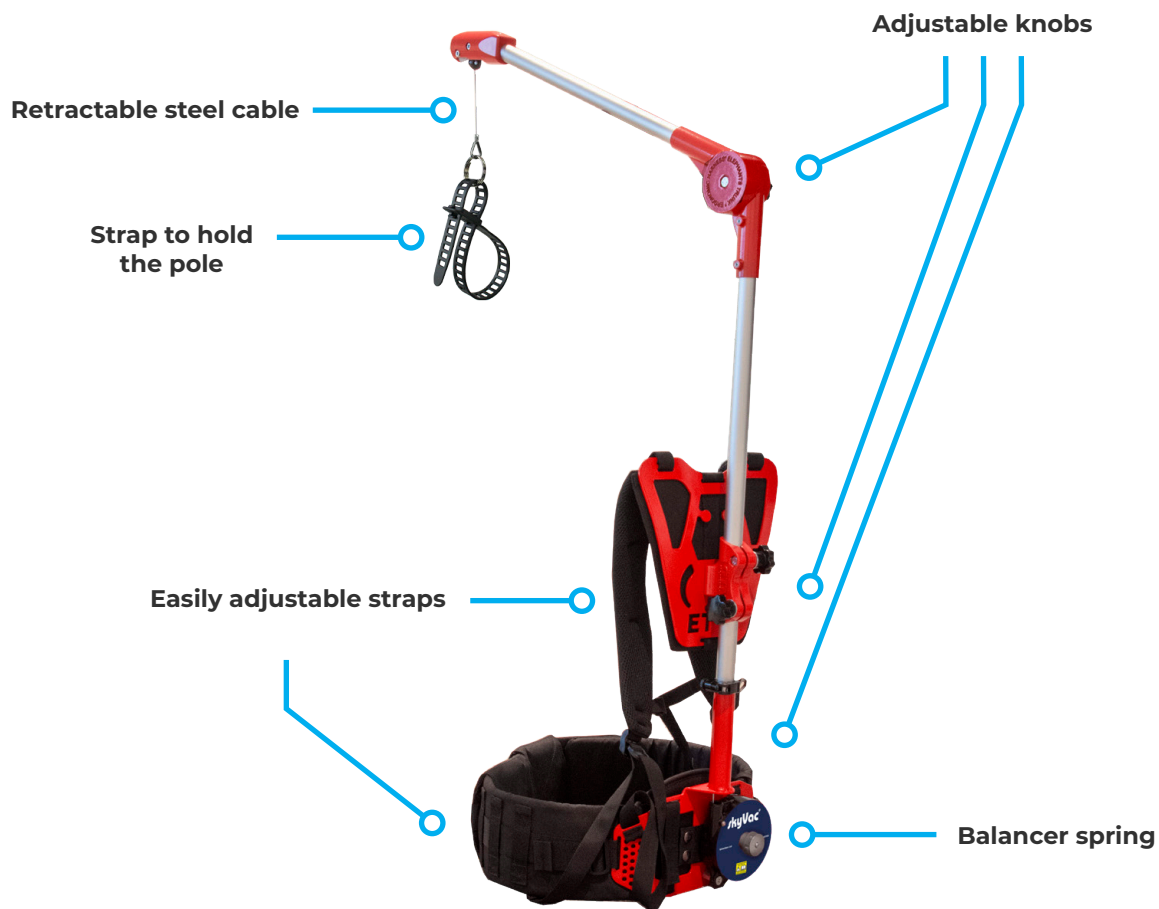
Please check no damage to the skyVac Harness or steel cable, and that all bolts and nuts are tightened firmly





Before starting to work with the skyVac Harness, the operator must have carefully read and understood this manual. Following the instructions and warnings in this manual ensures a smooth, efficient and safe handling of the skyVac Harness. **Never allow** children, persons with reduced physical, sensory or mental capabilities or lack of experience, and knowledge or people unfamiliar with these instructions to use the skyVac Harness. Users must be 16 years of age. Keep this manual for future reference.

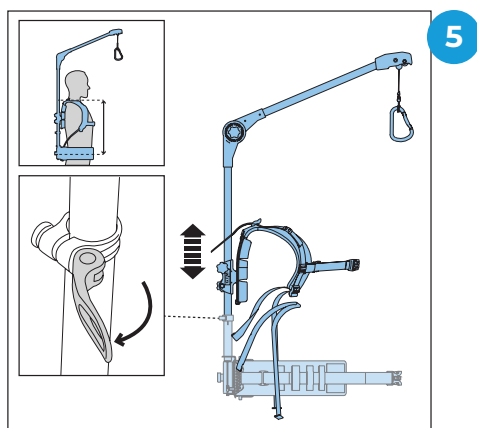
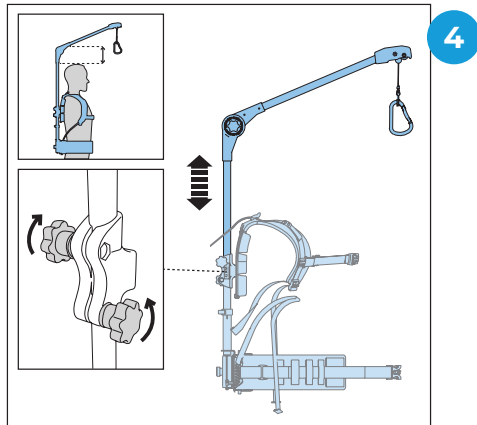
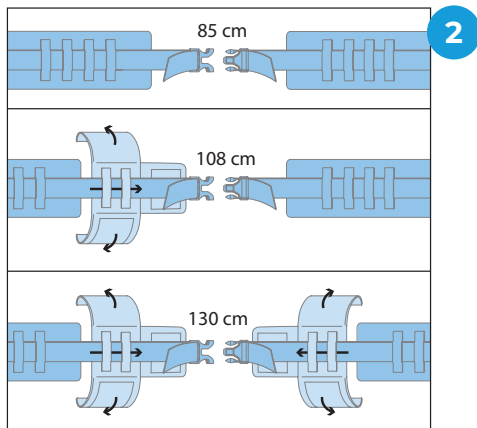
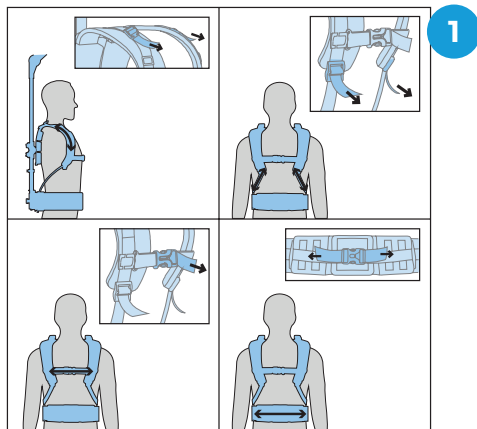
KEY FEATURES



PREPERATION

1. Wear appropriate PPE. Wear them at all times while operating skyVac Harness.
2. Do not operate the skyVac Harness when barefoot or wearing open shoes.
3. Make sure your workfloor is free of obstacles.
4. Never operate the skyVac Harness while people, children or pets are nearby.
5. It is prohibited to use the skyVac Harness for other use than described in this manual.
6. Do not use skyVac Harness in the dark

SETTING UP



ADJUSTING THE STRAPS

1. Adjust the straps to personal preference.
2. When necessary use extensions for waist band.
3. You can adjust the stability with the slide from shoulders to frame

ADJUSTING THE HARNESS

4. Loosen the knobs to adjust the space between your shoulders and the room above your head. After adjusting, fasten the knobs to lock the desired position.
5. Loosen the clamp to adjust the space between your hips and shoulders. After adjusting, fasten the clamp to lock the desired position. Make sure there is an overlap of minimal 4.5cm of the tubes.



Keep proper balance and footing at all times. Do not overreach.



Never operate the skyVac Harness with defective straps or defective buckles

ASSEMBLING POLES WITH SKYVAC HARNESS

1
Line up the number of poles you wish to use for the job onto the wall, plug the hose into vacuum and insert the vac release cuff on the other end of the hose. Place the end of the hose somewhere height level to avoid bending down



2
Insert end tool and tool holder onto the first pole



3
Pull down the retractable steel cable and feed the first pole (with the end tool attached) through the strap



4
Get the next pole and attach it to the first pole. Take care that your poles don't swing, by resting them on the wall



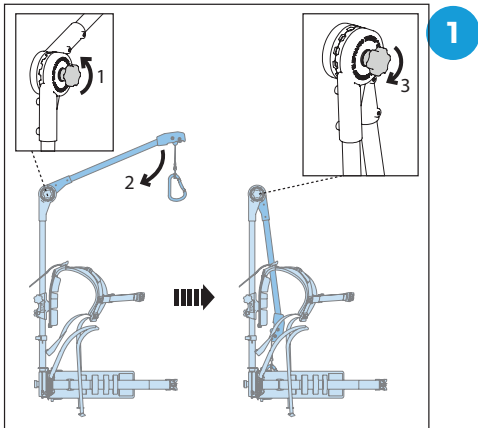
5
Repeat this process until you have reached the desired number of poles for the job and attach the hose onto the end of your last pole



DANGER: Beware of overhead electric cables when using poles. Poles are carbon fibre and conduct electricity. Always risk assess when using near overhead electric cables and use a safe method of working.

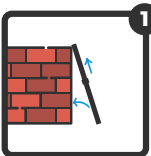


MAINTENANCE AND STORAGE



1. Store the skyVac Harness in a dry place out of reach of children.
2. We suggest cleaning the skyVac Harness after every use. Remove dust using a soft brush and or cloth.
3. Replace damaged parts for safety. Use only genuine replacement parts and accessories
4. When the skyVac Harness is disassembled, make sure that no debris can fall in the open tubes.

BEST PRACTICE



- 1 Build your poles up against the side of a building - **DO NOT** assemble on the ground and then lift up.



- 2 Wear the appropriate PPE

TROUBLE-SHOOTING

SYMPTOM	POTENTIAL CAUSE	REMEDY
Steel cable is not pulled into balancer anymore	- Steel cable is broken - Balancer spring is broken	- Replace the steel cable or balancer - Replace the balancer
Harness parts do not hold their position	Insufficient clamping force	Tighten the knobs and the nut of the clamp. Applying a bit of grease on the thread of the knobs helps tighten them easier

skyVac[®]

www.skyvac.com

Unit 33, Cornwell Business Park, Salthouse Road, Brackmills,
Northampton, NN4 7EX. United Kingdom. Company No. 04506121

+44 (0)1604 968700 | info@skyvac.com

PLEASE NOTE: All details and specifications accurate at time of print.