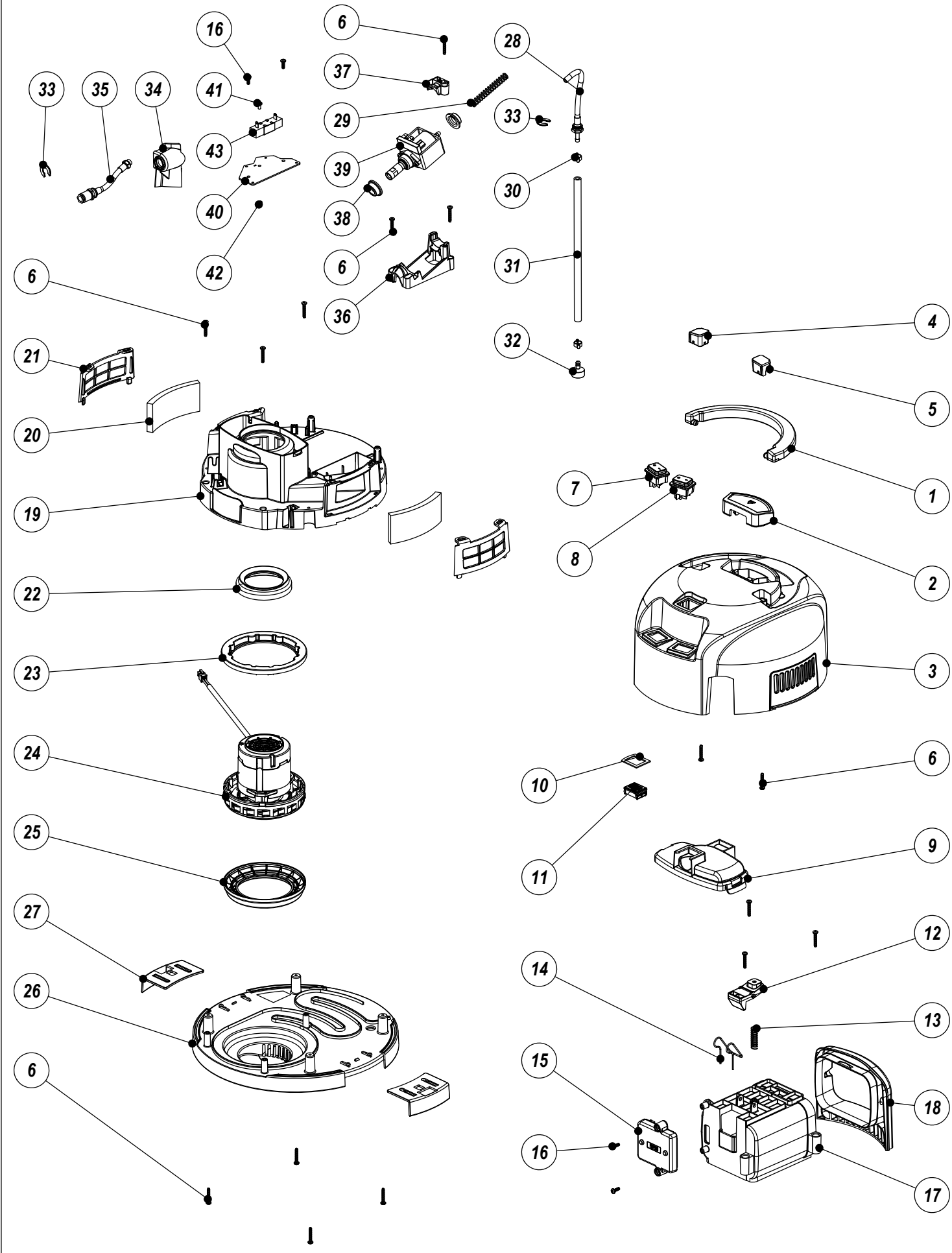


Numatic International Spare Parts

Model No: CORDLESS WET AND DRY (WITH PUMP) - EXPLODED DRAWING

914995
DRAWING: DRW-39117 ISS:A07
20/11/2023

NB: FOR WIRING SEE DRAWING: DRW-39323 (915402)



Numatic International Spare Parts

Model No: CORDLESS WET AND DRY (WITH PUMP) - EXPLODED DRAWING

ITEM NO.	PART NUMBER	DESCRIPTION	QTY	COMMENTS:
1	227120	HANDLE - HVR/HET/NRV	1	
2	914934	EJECT BUTTON - CORDLESS WET AND DRY	1	
3	914933	COVER - CORDLESS WET AND DRY (WITH PUMP CUT OUT)	1	
4	915377	HANDLE RETAINER - LH	1	
5	915378	HANDLE RETAINER - RH	1	
6	219369	No8 X 1 INCH LONG POZI PAN STAINLESS STEEL PLASTITE SCREW	15	TORQUE TO 2.6Nm ±0.15
7	914474	GREEN / BLACK EVEREL (NON ILLUMINATED) 125V / 250V ON/OFF ROCKER SWITCH	1	
8	914475	BLUE / BLACK EVEREL (NON ILLUMINATED) 125V / 250V ON/OFF ROCKER SWITCH	1	
9	914930	TOP MOTOR COVER - CORDLESS WET AND DRY	1	
10	291015	SWITCH GASKET - WV/CT	1	
11	903030	LED BATTERY LIFE INDICATOR WITH PCB	1	
12	914929	BATTERY LATCH - CORDLESS WET AND DRY	1	
13	216465	11MM COIL SPRING	1	
14	216655	BATTERY RELEASE SPRING	1	
15	915299	ASSEMBLY.NX300 WET AND DRY.PUMP	1	
16	219569	No8 X 1/2 INCH LONG POZI PAN STAINLESS STEEL PLASTITE SCREW	4	TORQUE TO 1.6Nm ±0.15
17	915274	BATTERY HOUSING - CORDLESS WET AND DRY	1	
18	915363	REAR PANEL - CORDLESS WET AND DRY	1	
19	914927	TOP MOTOR HOUSING - CORDLESS WET AND DRY	1	
20	914989	EXHAUST FOAM - CORDLESS WET AND DRY	2	
21	914935	FOAM RETAINER - CORDLESS WET AND DRY	2	
22	914926	TOP GASKET - CORDLESS WET AND DRY	1	
23	914925	MID GASKET - CORDLESS WET AND DRY	1	
24	914156	CINDERSON BYPASS MOTOR ASSEMBLY (36V DC 400W)	1	
25	914924	BOTTOM GASKET - CORDLESS WET AND DRY	1	
26	914923	BOTTOM MOTOR HOUSING (PUMP) - CORDLESS WET AND DRY	1	
27	237115	NRV HARD EDGE TOGGLE	2	
28	915307	SOLUTION PICKUP TUBE ASSEMBLY - CORDLESS WET AND DRY	1	
29	219327	80MM LONG COMPRESSION SPRING	1	
30	219319	O CLIP 11-13 MM	2	
31	213015	BRAIDED PVC HOSE 6.3MM I/D X 11.5MM O/D (260MM)	1	
32	502040	GAUZE FILTER ASSEMBLY	1	
33	907033	C' CLIP	2	
34	914988	BULKHEAD MOULDING - CORDLESS WET AND DRY	1	
35	915306	BULKHEAD ASSEMBLY - CORDLESS WET AND DRY	1	TORQUE TO 1.0Nm ±0.15
36	915276	PUMP ADAPTER - CORDLESS WET AND DRY	1	
37	915277	PUMP RETAINER - CORDLESS WET AND DRY	1	
38	916229	FLEXIBLE PUMP GROMMET	2	
39	915300	KELI EPL-34 PUMP (24VAC / 50HZ / 26W / ED100%) (B6022EPL001A)	1	nur in CTB370NX
40	915204	RESISTOR HEAT SINK - CORDLESS WET AND DRY	1	
41	291164	M4 X 8MM LONG TORX PAN TAPTITE SCREW S/S	1	
42	219687	M4 STAINLESS STEEL NYLON INSERT NUT	1	
43	N/A	SQBW2010RJ RESISTOR (1623779-5)	1	SHOWN FOR ASSEMBLY ONLY