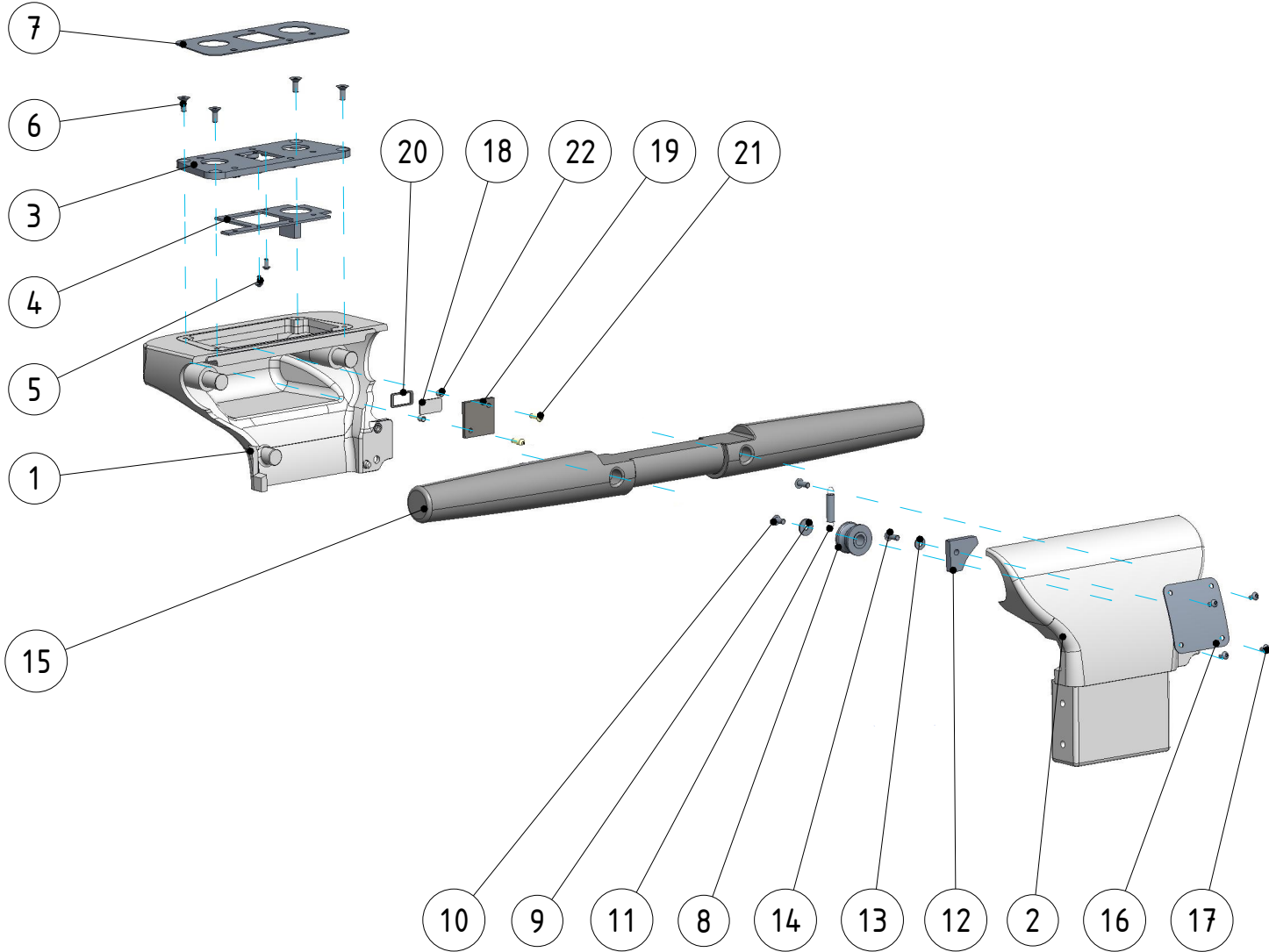


26	134.0389.0	egols-G325 GREASE MG0088	0.095	
25	134.0315.0	SCREW M6-1.0 X 10.0MM BTNHCS SS ISO7380 MS0895	1	
24	134.0038.0	RING, 28MM EXTERNAL SNAP MS0441	1	
23	134.0037.0	NYLON DRIVEN GEAR, 40 TEETH (TOOLING# YM0115) US0247	1	
22	134.0036.0	NYLON DRIVEN GEAR, 30 TEETH (TOOLING# YM0115) US0246	1	
21	134.0035.0	GASKET, GEARBOX (TOOLING# 0149) MO0676	1	
20	134.0306.0	WASHER, M6 FLT SS DINI25 MS0256	4	
19	134.0312.0	SCREW M6-1.0 X15.0MM BTNHCS SS ISO7380 MS0727	6	
18	134.0032.0	BALL BEARING, 6902HZZ MM1465	2	
17	134.0031.0	BUSHING, DRIVING AXLE (A) MM1338	1	
16	134.0030.0	BUSHING, DRIVING AXLE (B) MM1394	1	
15	134.0302.0	WASHER, M6 DSP SS MS0724	3	
14	134.0029.0	SCREW SOCKET CAP M6-1.0 X 20.0MM ZNPLT MS0725	1	
13	134.0028.0	DRIVER (TOOLING# YM0028) UI0773	1	
12	134.0027.0	BRUSH MOTOR US0275	1	
11	134.0026.0	GASKET, 30*17*5 MM NITRILE RUBBER	1	
10	134.0025.0	NYLON GEAR, 30 TEETH INPUT MO0700	1	
9	134.0024.0	NYLON GEAR, 22 TEETH OUTPUT MM1333	1	
8	134.0388.0	RING, 8MM EXTERNAL SNAP SS MS0917	1	
7	134.0310.0	SCREW M5-0.8 X15.0MM BTNHCS SS ISO7380 MS0713	5	
6	134.0309.0	SCREW M5-0.8 X 10.0MM TFLHMS SS MS0882	1	
5	134.0022.0	SHAFT, POSITIONING WHEEL MM1457	1	
4	134.0021.0	POSITIONING WHEEL MO0674	1	
3	134.0020.0	DRIVING AXLE MM1331	1	
2	134.0018.0	COVER, GEARBOX (TOOLING# YM0128) US0271	1	
1	134.0017.0	HOUSING, GEARBOX (TOOLING# YM0127) US0270	1	
REF	PART NO	DESCRIPTION	QTY	REMARKS

REV	DESCRIPTION	ECN	REV BY	DATE
A	RELEASE FOR PRODUCTIONS(REV_A)	-	周佳奇	04-11-2024

DIMENSIONS ARE IN MM
TOLERANCES:
.X ± 0.5
.XX ± 0.25
.XXX ± 0.025
∠ ± 0.1



DRAWN		NAME	DATE	 YM Cleaning Products Co., Ltd. No. 1 Han Hu Rd., Xixi, Liao Bu, City of Dong Guan
CHECKED		周佳奇	04-11-2024	
ENG APPR.				
MFG APPR.				
Q.A.				
COMMENTS:				TITLE: SUB-ASSEMBLY, GEARBOX UA0631
THE INFORMATION CONTAINED IN THIS DRAWING IS PROPRIETARY AND MAY CONTAIN TRADE SECRETS AND PATENTABLE SUBJECTS WHICH ARE THE EXCLUSIVE PROPERTY OF YM CLEANING PRODUCTIONS CO., LTD.				
SCALE:		PART NO.	REV	
1 : 0.23		S.134.0017.0	A	
DO NOT SCALE DRAWING		SHEET 1 OF 1		

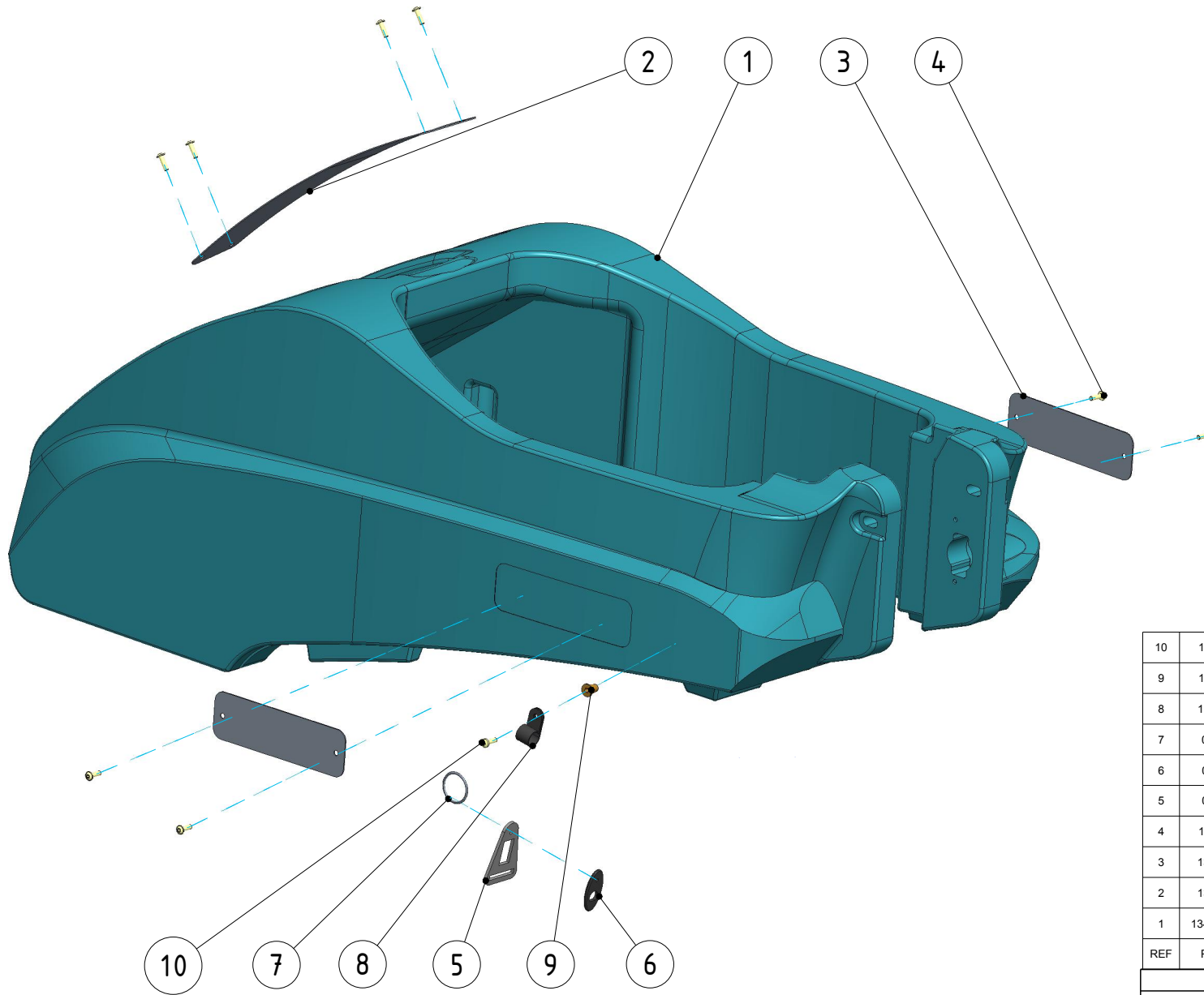


22	134.0397.0	SPACER,TIMER MO0744	2	
21	134.0396.0	SCREW M3-0.5 X 10.0MM BTNHCS SS ISO7380 MS0932	2	
20	72.0428.0	EVA FOAM T:1MM	1	
19	72.0416.1	24V TIMER PCB with 250mm 2P/PH2.5	1	
18	134.0395.0	TIMER COVER UI0936	1	
17	134.0393.0	SEALED RIVET ALU 1/8*6MM MS0801	4	
16	134.0392.0	QR CODE PLATE MM1532	1	
15	134.0042.0	HANDLE BAR UM0318	1	
14	134.0398.0	SCREW M4-0.5 X 15.0MM PHPNHS SS MS0848	1	
13	134.0305.0	WASHER, M4 FLT SS DINI25 MS0247	1	
12	134.0050.0	BUMPER RUBBER (TOOLING# YM0144) MO0701	2	
11	134.0054.0	SPRING, COMP, 6.0MM OD X 6.0MM SS MS0887	1	
10	134.0308.0	SCREW M5-0.8 X 10.0MM BTNHCS SS ISO7380 MS0784	2	
9	134.0306.0	WASHER, M6 FLT SS DINI25 MS0256	1	
8	134.0057.0	PULLEY, U SHAPED OD 22.5MM MM1417	1	
7	134.0058.0	OPERATION DECAL, ENGLISH MPL260	1	
6	134.0318.0	SCREW M4-0.7 X 10.0MM TFLHMS SS MS0770	4	
5	134.0323.0	SCREW M3-0.5 X 6.0MM PHPNHS SS MS0894	2	
4	134.0060.0	LED DISPLAY PCB ME0302	1	
3	134.0059.0	CONTROL PANEL (TOOLING# YM0117) UI0892	1	
2	134.0041.0	HANDLE COVER, FRONT US0266	1	
1	134.0040.0	HANDLE COVER, REAR US0265	1	
REF	PART NO	DESCRIPTION	QTY	REMARKS


REV	DESCRIPTION	ECN	REV BY	DATE
A	RELEASE FOR PRODUCTION (REV A)	-	周佳奇	04-13-2024

**DIMENSIONS ARE IN MM
TOLERANCES:**
.X ± 0.5
.XX ± 0.25
.XXX ± 0.025
∠ ± 0.1

DRAWN	周佳奇	DATE	04-13-2024	 YM Cleaning Products Co., Ltd. No. 1 Han Hu Rd., Xixi, Liao Bu, City of Dong Guan
CHECKED				
ENG APPR.				
MFG APPR.				
Q.A.				
COMMENTS:				TITLE: SUB-ASSEMBLY, HANDLE UA0630
THE INFORMATION CONTAINED IN THIS DRAWING IS PROPRIETARY AND MAY CONTAIN TRADE SECRETS AND PATENTABLE SUBJECTS WHICH ARE THE EXCLUSIVE PROPERTY OF YM CLEANING PRODUCTIONS CO., LTD.				
SCALE: 1:0.21				
		PART NO.	REV	
		S.134.0040.0	A	
DO NOT SCALE DRAWING				SHEET 1 OF 1

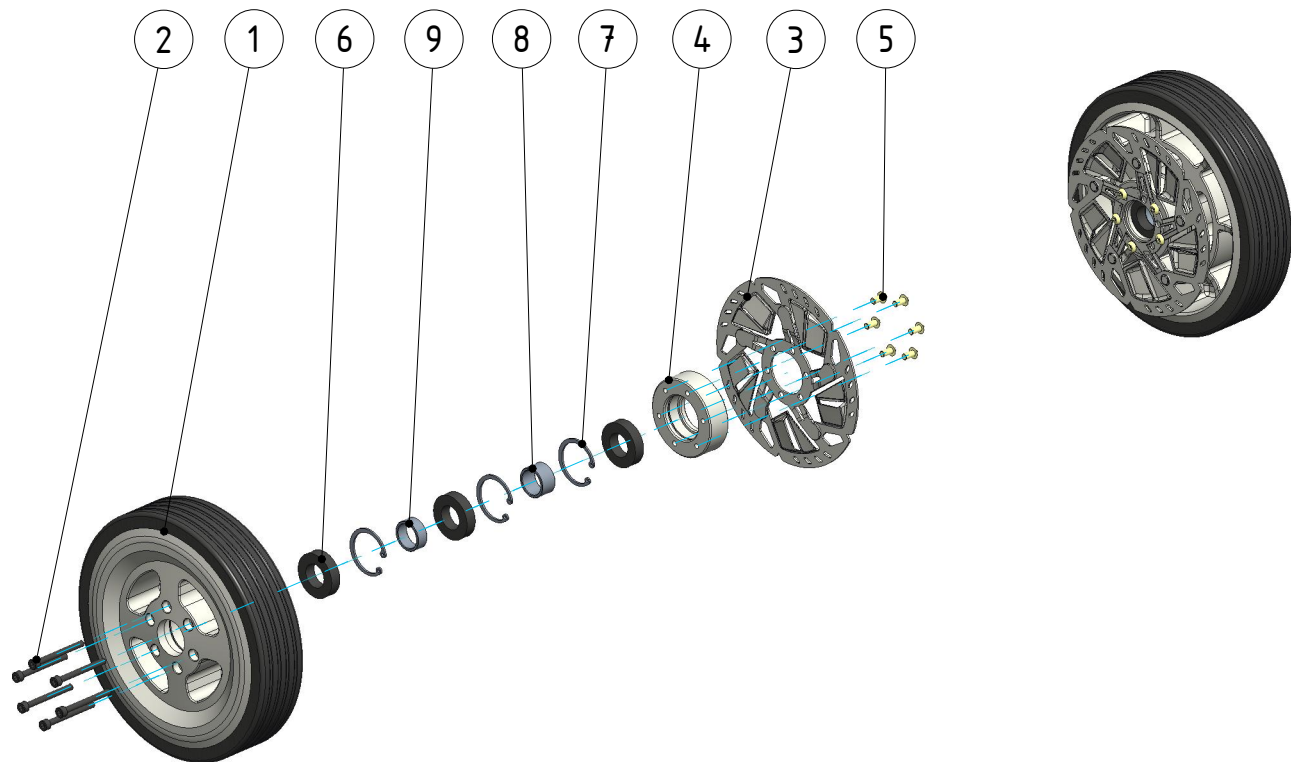


10	134.0406.0	SCREW M4-0.5 X 12.0MM PHPNHS SS MS0607	1	
9	134.0405.0	NUT.M4 MS0606	1	
8	134.0404.0	CLAMP, 3/4 DIA NYLON BLK MO0727	1	
7	03.0040.0	METAL RING DIAMETER 30MM	1	
6	03.0038.0	CABLE RESTRAIN PART CAN SIDE	1	
5	03.0041.0	CABLE RESTRAIN PART CABLE SIDE	1	
4	134.0403.0	SEALED RIVET ALU 4*12MM MS0358	8	
3	134.0402.0	i-Escalate 520 LABEL MM1480	2	
2	134.0401.0	i-Escalate LABEL MM1481	1	
1	134.0081.797	BLUE TANK UR0197	1	
REF	PART NO	DESCRIPTION	QTY	REMARKS

NAME		DATE		YM Cleaning Products Co., Ltd.	
DRAWN		04-10-2024		 No. 1 Han Hu Rd., Xixi, Liao Bu, City of Dong Guan	
CHECKED				TITLE:	
ENG APPR.				SUB-ASSEMBLY MAIN BODY UA0633	
MFG APPR.					
Q.A.					
COMMENTS:				SCALE:	
THE INFORMATION CONTAINED IN THIS DRAWING IS PROPRIETARY AND MAY CONTAIN TRADE SECRETS AND PATENTABLE SUBJECTS WHICH ARE THE EXCLUSIVE PROPERTY OF YM CLEANING PRODUCTIONS CO., LTD.				PART NO.	
				REV	
				S.134.0081.0	
				A	
DO NOT SCALE DRAWING				SHEET 1 OF 1	

DIMENSIONS ARE IN MM
 TOLERANCES:
 .X ± 0.5
 .XX ± 0.25
 .XXX ± 0.025
 ∠ ± 0.1

REV	DESCRIPTION	ECN	REV BY	DATE
A	RELEASE FOR PRODUCTION (REV A)	-	周佳奇	04-10-2024

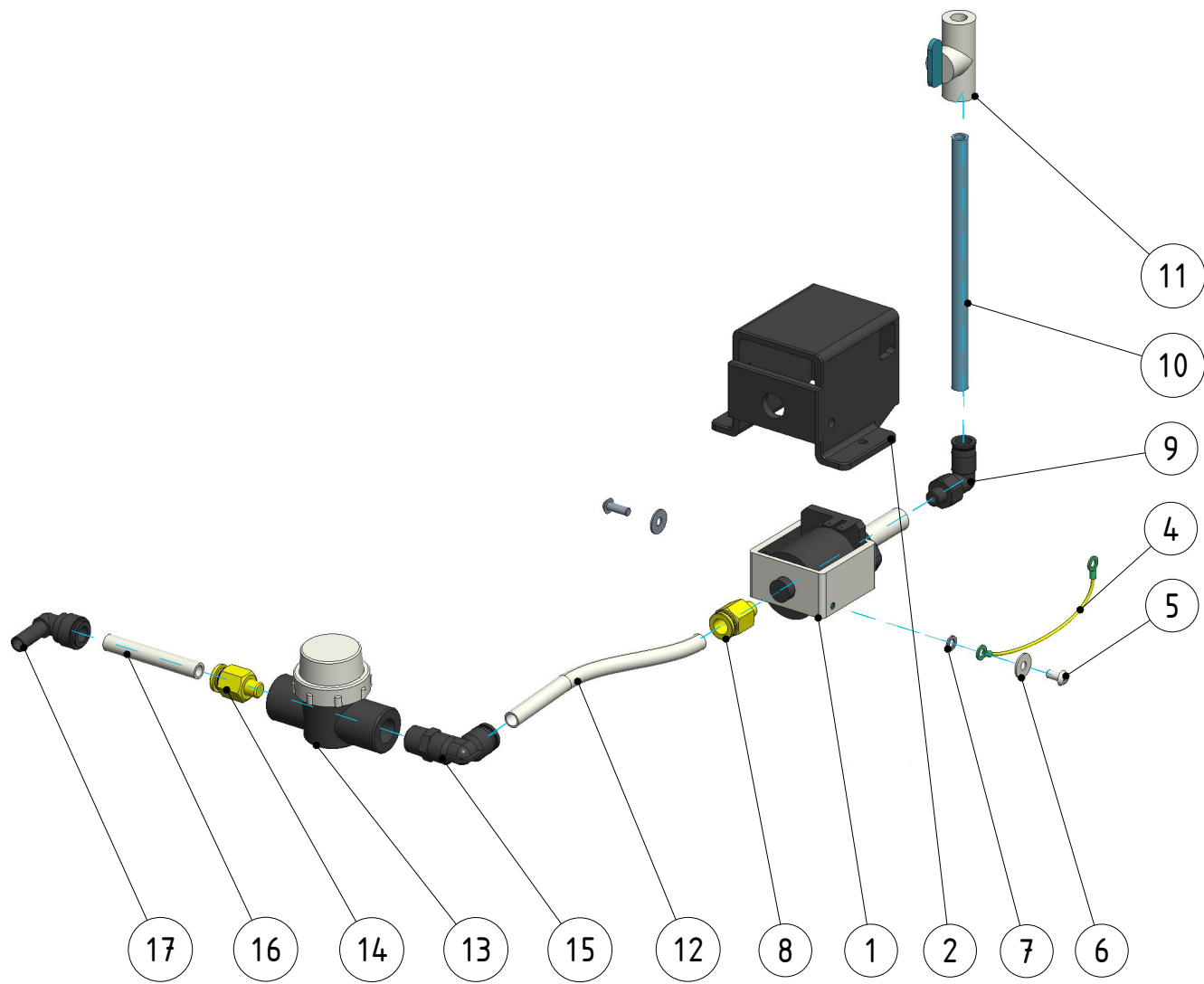


9	134.0110.0	BUSHING, FRONT WHEEL B MM1412	2	
8	134.0109.0	BUSHING, FRONT WHEEL A MM1411	2	
7	134.0108.0	SNAP RING, 37MM ID, BLACK MS0893	6	
6	134.0107.0	BALL BEARING, 6904ZZNR MM1410	6	
5	134.0308.0	SCREW M5-0.8 X 10.0MM BTNHCS SS ISO7380 MS0784	12	
4	134.0106.0	BRACKET, BRAKING PLATE MM1390	2	
3	134.0105.0	BRAKING PLATE, OD160*1.8MM MM1409	2	
2	134.0099.0	SCREW SOCKET CAP M5-0.8 X 50.0MM SS MS0890	12	
1	134.0098.0	WHEEL, 8.2" X 1.9" US0273	2	
REF	PART NO	DESCRIPTION	QTY	REMARKS

NAME		DATE		YM Cleaning Products Co., Ltd.	
DRAWN		04-12-2024		No. 1 Han Hu Rd., Xixi, Liao Bu, City of Dong Guan	
CHECKED				TITLE:	
ENG APPR.				SUB-ASSEMBLY FRONT WHEELS UA0580	
MFG APPR.					
Q.A.					
COMMENTS:		THE INFORMATION CONTAINED IN THIS DRAWING IS PROPRIETARY AND MAY CONTAIN TRADE SECRETS AND PATENTABLE SUBJECTS WHICH ARE THE EXCLUSIVE PROPERTY OF YM CLEANING PRODUCTIONS CO., LTD.		SCALE: 1:0.15	
				PART NO. S.134.0098.0	
				REV A	
		DO NOT SCALE DRAWING		SHEET 1 OF 1	

DIMENSIONS ARE IN MM
TOLERANCES:
.X ± 0.5
.XX ± 0.25
.XXX ± 0.025
∠ ± 0.1


REV	DESCRIPTION	ECN	REV BY	DATE
A	RELEASE FOR PRODUCTION (REV A)	-	周佳奇	04-12-2024

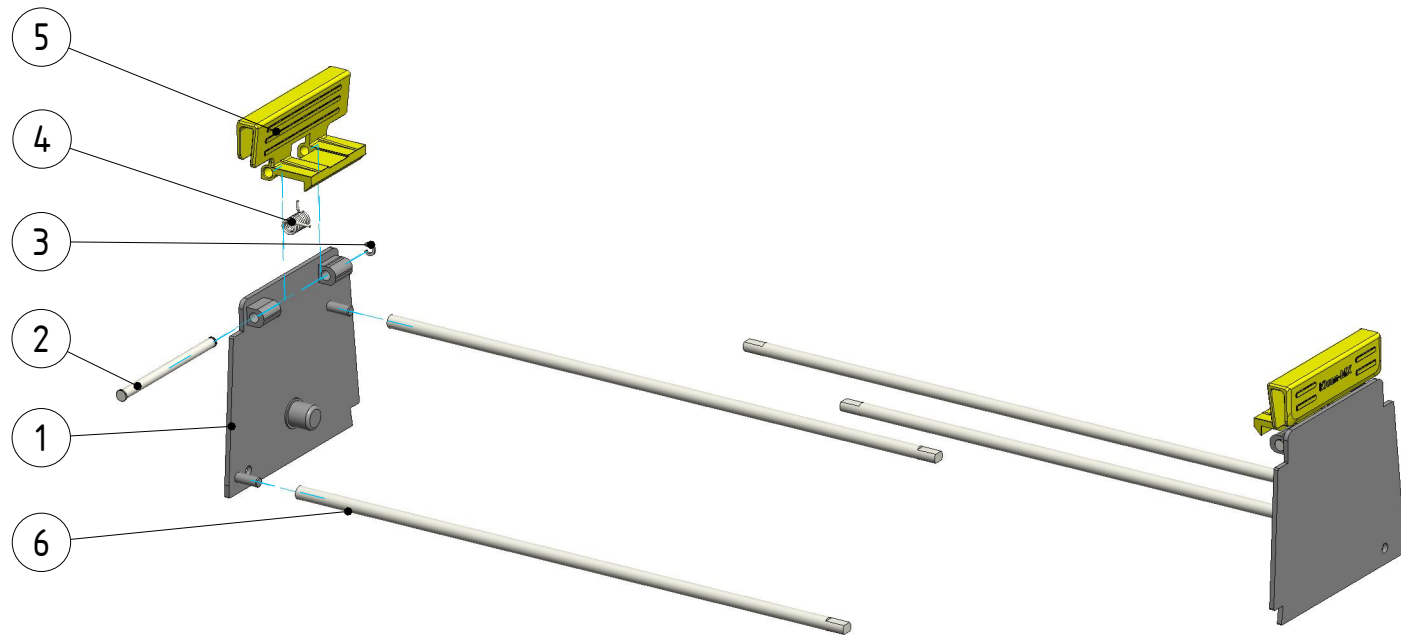


18	134.0177.2	HARNES XR-2410069 ME0326	1	
17	134.0123.0	QUICK CONNECTOR ELBOW, PISCO PLJ3/8 MM1392	1	
16	134.0117.0	HOSE, BLUE 3/8*65MM UA0589	1	
15	134.0120.0	QUICK CONNNECTOR, PISCO PL3/8-03 ELBOW MM1428	1	
14	134.0119.0	QUICK CONNECTOR, PISCO PC3/8-03 MM1427	1	
13	134.0118.0	STRAINER, RECT, 80 MESH SS FA0319	1	
12	134.0115.0	HOSE, OD10*ID6.5MM*200MM TRANSPARENT UA0611	1	
11	134.0160.0	SHUT OFF VALVE MM1429	1	
10	134.0116.0	HOSE, BLUE 3/8*340MM UA0588	1	
9	134.0114.0	QUICK CONNECTOR, PISCO PL3/8-01 MM1512	1	
8	134.0122.0	QUICK CONNECTOR, PISCO POC10-01 MM1471	1	
7	134.0045.1	WASHER, M5 SHPRF MS0238	1	
6	134.0411.0	WASHER, M5 FLT SS DINI25 MS0240	2	
5	134.0308.0	SCREW M5-0.8 X 10.0MM BTNHCS SS ISO7380 MS0784	2	
4	134.0112.0	WIRING, YELLOW/GREEN 14AWG, #10R X #10R ME0007	1	
3	134.0135.0	HARNES, PCB XR-2410056-1,2 ME0325	1	
2	134.0113.0	HOUSING, PUMP MO0704	1	
1	134.0111.0	FLOJET ET508244/HP 230V ME0307	1	
REF	PART NO	DESCRIPTION	QTY	REMARKS

REV	DESCRIPTION	ECN	REV BY	DATE
A	RELEASE FOR PRODUCTION (REV A)	-	周佳奇	04-11-2024

DIMENSIONS ARE IN MM
 TOLERANCES:
 .X ± 0.5
 .XX ± 0.25
 .XXX ± 0.025
 ∠ ± 0.1



DRAWN		NAME	周佳奇	DATE	04-11-2024	 YM Cleaning Products Co., Ltd. No. 1 Han Hu Rd., Xixi, Liao Bu, City of Dong Guan	
CHECKED		TITLE:					
ENG APPR.		SUB-ASSEMBLY PUMP UA0658					
MFG APPR.		SCALE:					
Q.A.		PART NO.					
COMMENTS:						REV	
THE INFORMATION CONTAINED IN THIS DRAWING IS PROPRIETARY AND MAY CONTAIN TRADE SECRETS AND PATENTABLE SUBJECTS WHICH ARE THE EXCLUSIVE PROPERTY OF YM CLEANING PRODUCTIONS CO., LTD.						1:0.25 DO NOT SCALE DRAWING	
SHEET 1 OF 1						S.134.0111.0 A	

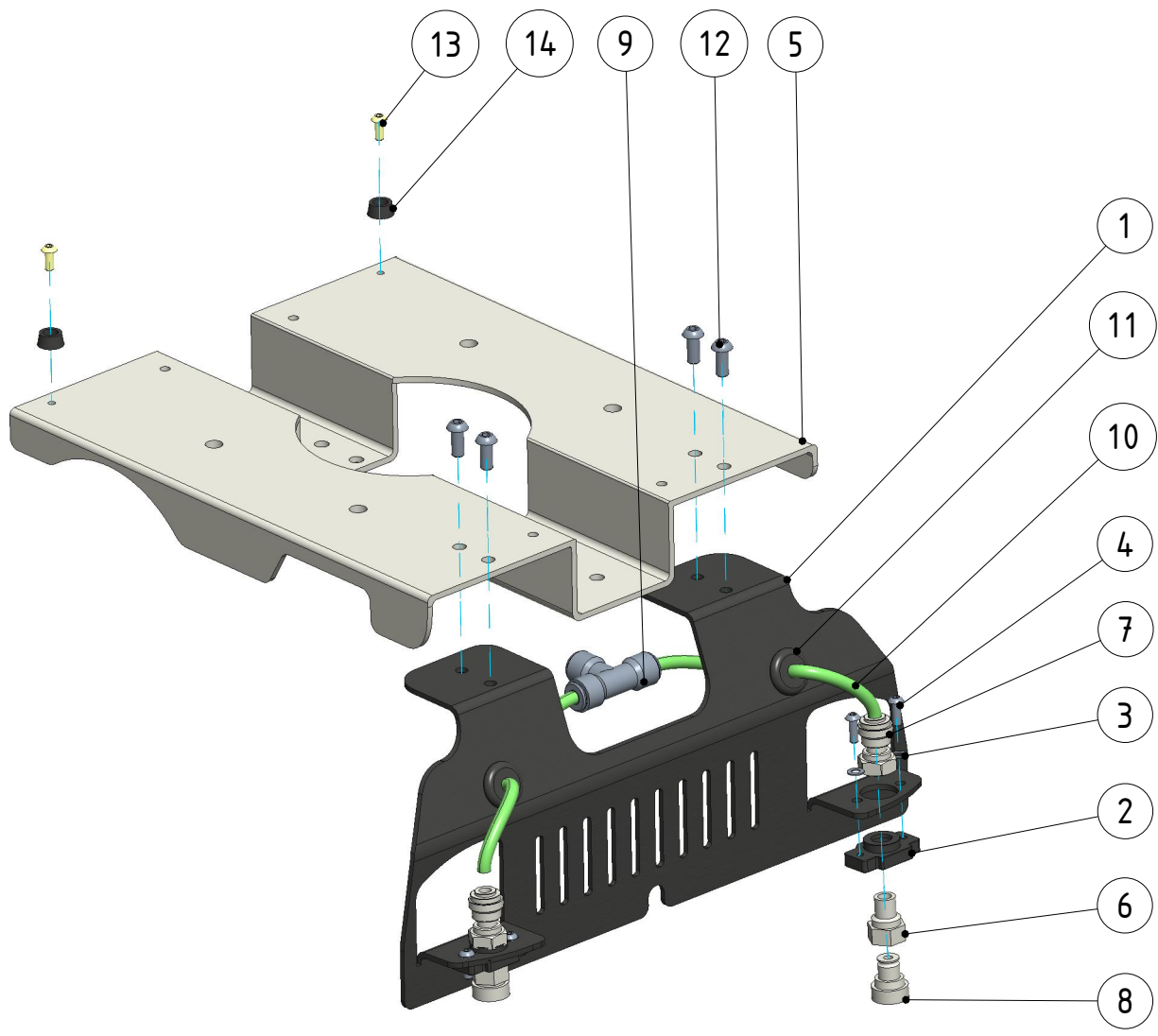


REF	PART NO	DESCRIPTION	QTY	REMARKS
6	134.0145.0	PIN, OD8*335MM MM1097	4	
5	134.0144.0	BRUSH RACK HANDLES RAL1018 US0261	2	
4	134.0143.0	SPRING, ID7.5*18MM MS0740	2	
3	134.0142.0	SNAP RING RADIAL 5MM DIN6799 MS0833	2	
2	134.0141.0	PIN, OD6.0*93.6MM MM1425	2	
1	134.0140.357	BEARING, BRUSH METAL MM1497	2	

REV	DESCRIPTION	ECN	REV BY	DATE
A	RELEASE FOR PRODUCTION(REV_A)	-	周佳奇	04-11-2024

**DIMENSIONS ARE IN MM
TOLERANCES:**
.X ± 0.5
.XX ± 0.25
.XXX ± 0.025
∠ ± 0.1

DRAWN	周佳奇	DATE	04-11-2024	 YM Cleaning Products Co., Ltd. No. 1 Han Hu Rd., Xixi, Liao Bu, City of Dong Guan
CHECKED		TITLE:		
ENG APPR.		SUB-ASSEMBLY BRUSH UA0634		
MFG APPR.				
Q.A.				
COMMENTS:				SCALE: 1 : 0.23
<small>THE INFORMATION CONTAINED IN THIS DRAWING IS PROPRIETARY AND MAY CONTAIN TRADE SECRETS AND PATENTABLE SUBJECTS WHICH ARE THE EXCLUSIVE PROPERTY OF YM CLEANING PRODUCTIONS CO., LTD.</small>				PART NO. S.134.0140.0
<small>DO NOT SCALE DRAWING</small>				REV A
				SHEET 1 OF 1

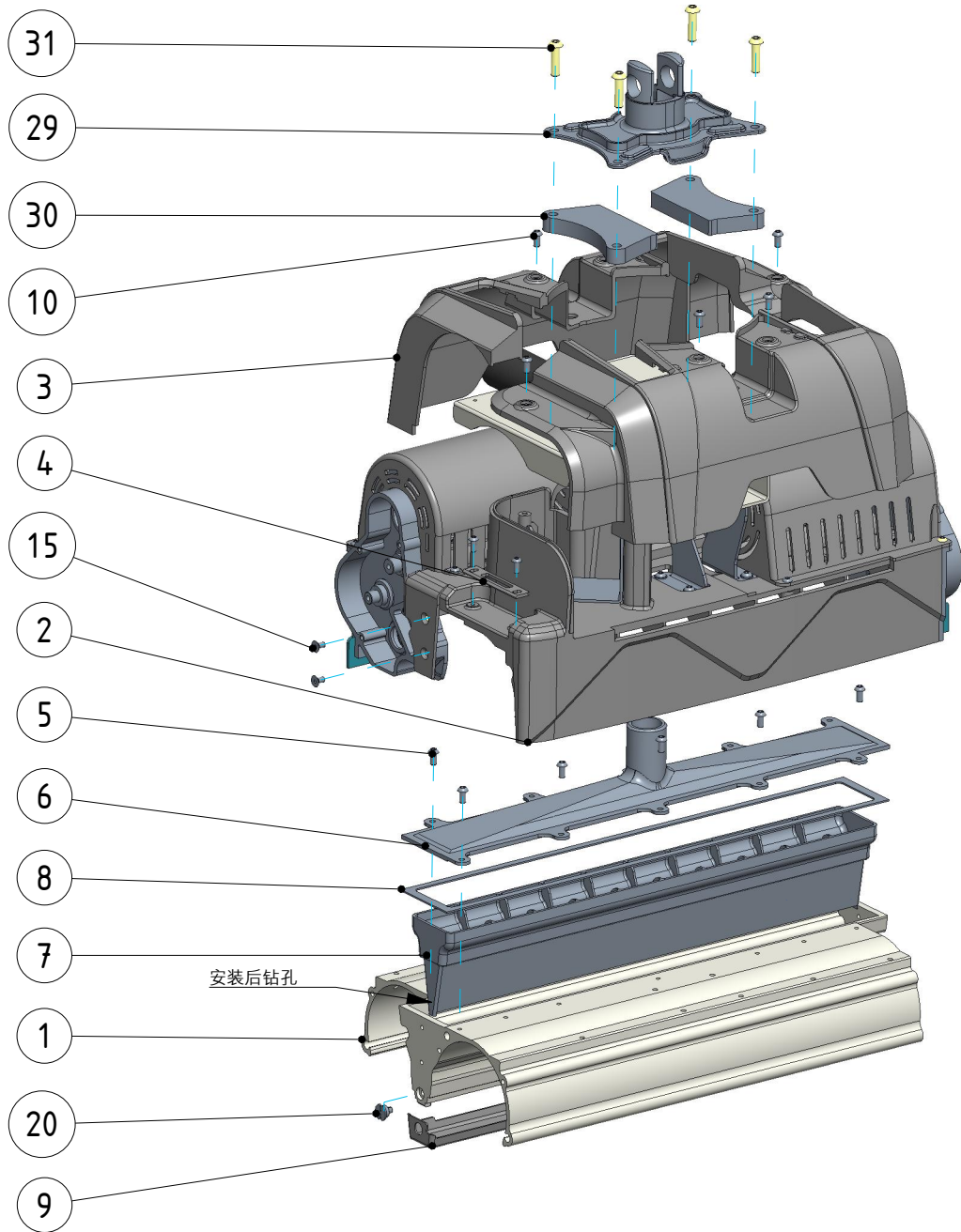


14	134.0174.0	RUBBER BUFFER MO0695	2	
13	134.0324.0	SCREW M4-0.7 X 10.0MM BTNHCS SS ISO7380 MS0787	2	
12	134.0312.0	SCREW M6-1.0 X15.0MM BTNHCS SS ISO7380 MS0727	4	
11	134.0152.0	GASKET RSE-879-R001 FI0122	2	
10	134.0158.0	HOSE, GREEN 1/4*170MM UA0591	2	
9	134.0159.0	TEE 3/8X1/4 JOHN PP30080812W MM1230	1	
8	134.0150.0	NOZZLE, WHITE QMVV-11001 MM1233	2	
7	134.0153.0	QUICK CONNECTOR NPTF PISCO PCF1/4-N1U MM1235	2	
6	134.0149.0	CONNECTOR, FLOTILLA 1/8NPT MM1232	2	
5	134.0151.0	COVER, SHEET METAL MM1360	1	
4	134.0330.0	SCREW SOCKET CAP M4-0.7 X 12.0MM SS MS0767	4	
3	134.0305.0	WASHER, M4 FLT SS DINI25 MS0247	4	
2	134.0148.0	BRACKET, NOZZLE UI0857	2	
1	134.0147.0	BRACKET, SHEET METAL MM1358	1	
REF	PART NO	DESCRIPTION	QTY	REMARKS

NAME		DATE		YM Cleaning Products Co., Ltd.	
DRAWN		04-11-2024		No. 1 Han Hu Rd., Xixi, Liao Bu, City of Dong Guan	
CHECKED				TITLE:	
ENG APPR.				SUB-ASSEMBLY NOZZLE UA0585	
MFG APPR.					
Q.A.					
COMMENTS:		THE INFORMATION CONTAINED IN THIS DRAWING IS PROPRIETARY AND MAY CONTAIN TRADE SECRETS AND PATENTABLE SUBJECTS WHICH ARE THE EXCLUSIVE PROPERTY OF YM CLEANING PRODUCTIONS CO., LTD.		SCALE:	
		1:0.3		PART NO.	
		S.134.0147.0		REV	
		A		DO NOT SCALE DRAWING	
		SHEET 1 OF 1			

REV	DESCRIPTION	ECN	REV BY	DATE
A	RELEASE FOR PRODUCTION (REV A)	-	周佳奇	04-11-2024



DIMENSIONS ARE IN MM
TOLERANCES:
.X ± 0.5
.XX ± 0.25
.XXX ± 0.025
∠ ± 0.1

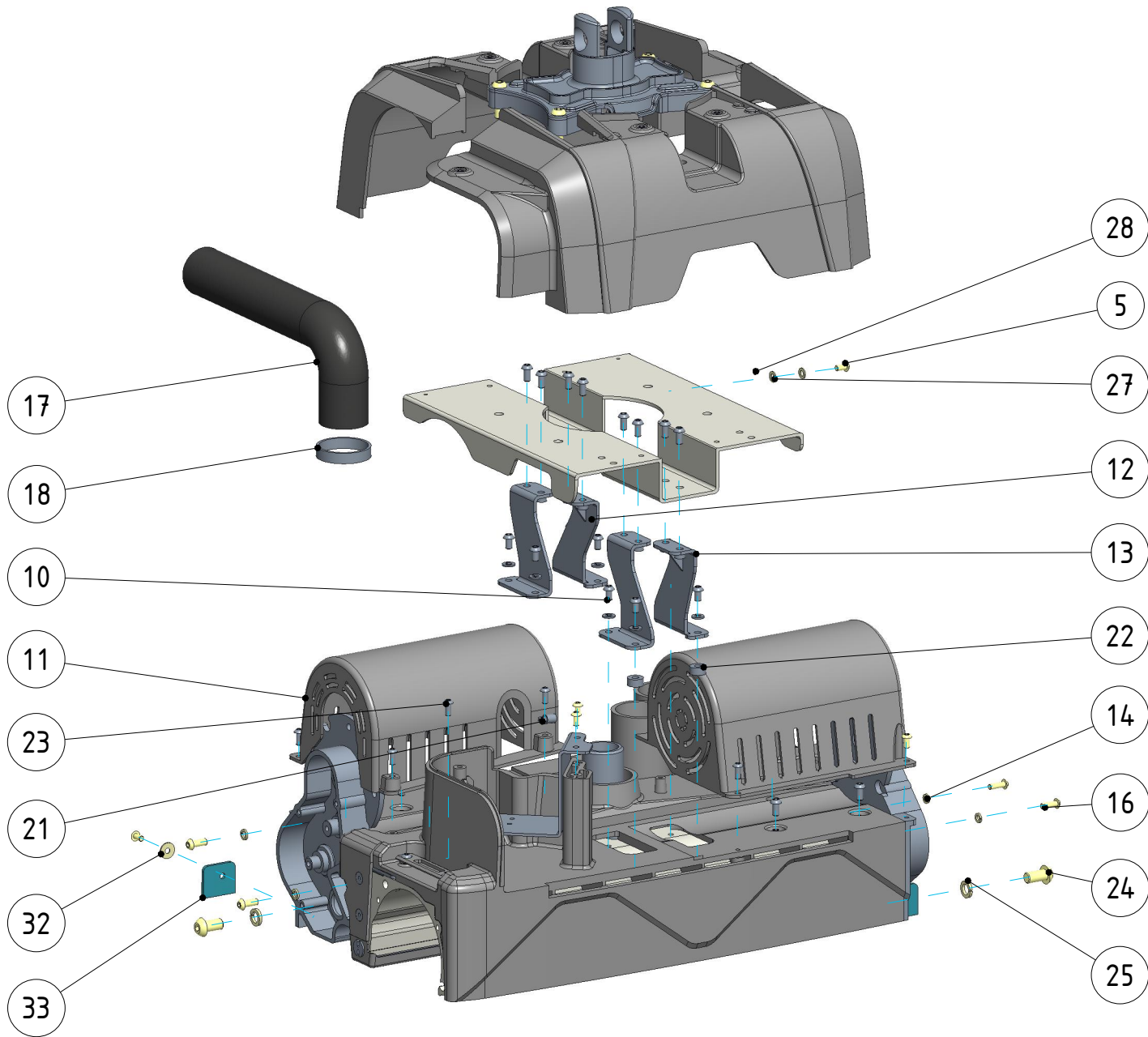


19	134.0177.0	HARNES XR-2410053 ME0289	1	
18	134.0079.0	CLAMP, WORM GEAR 21-44MM MM0041	1	
17	134.0175.0	VAC HOSE MO0708	1	
16	134.0312.0	SCREW M6-1.0 X15.0MM BTNHCS SS ISO7380 MS0727	20	
15	134.0309.0	SCREW M5-0.8 X 10.0MM TFLHMS SS MS0882	4	
14	134.0302.0	WASHER, M6 DSP SS MS0724	12	
13	134.0173.0	BRACKET RIGHT, BRUSH HOUSING MM1368	2	
12	134.0172.0	BRACKET LEFT, BRUSH HOUSING MM1367	2	
11	134.0171.0	HOUSING, BRUSH MOTOR UI0924	2	
10	134.0315.0	SCREW M6-1.0 X 10.0MM BTNHCS SS ISO7380 MS0895	10	
9	134.0170.0	TRAY MO0721	1	
8	134.0169.0	GASKET, VAC-SHOE MO0684	1	
7	134.0168.0	VAC-SHOE UI0865	1	
6	134.0167.0	VAC-SHOE TOP UI0864	1	
5	134.0308.0	SCREW M5-0.8 X 10.0MM BTNHCS SS ISO7380 MS0784	27	
4	134.0166.0	BRACKET, BRUSH RACK HANDLES MM1496	2	
3	134.0165.0	FRONT COVER UI0925	2	
2	134.0164.0	HOUSING COVER, PLASTIC UM0310	1	
1	134.0163.0	HOUSING, EXTRUDED US0272	1	
REF	PART NO	DESCRIPTION	QTY	REMARKS

REV	DESCRIPTION	ECN	REV BY	DATE
A	RELEASE FOR PRODUCTION (REV A)	-	周佳奇	04-12-2024

DIMENSIONS ARE IN MM
TOLERANCES:
.X ± 0.5
.XX ± 0.25
.XXX ± 0.025
∠ ± 0.1



NAME		DATE	YM Cleaning Products Co., Ltd.	
DRAWN		周佳奇	04-12-2024	 No. 1 Han Hu Rd., Xixi, Liao Bu, City of Dong Guan
CHECKED				
ENG APPR.				
MFG APPR.				
Q.A.				
COMMENTS:				
THE INFORMATION CONTAINED IN THIS DRAWING IS PROPRIETARY AND MAY CONTAIN TRADE SECRETS AND PATENTABLE SUBJECTS WHICH ARE THE EXCLUSIVE PROPERTY OF YM CLEANING PRODUCTIONS CO., LTD.				
SCALE:		PART NO.		REV
1:0.15		S.134.0163.0		A
DO NOT SCALE DRAWING				SHEET 1 OF 2

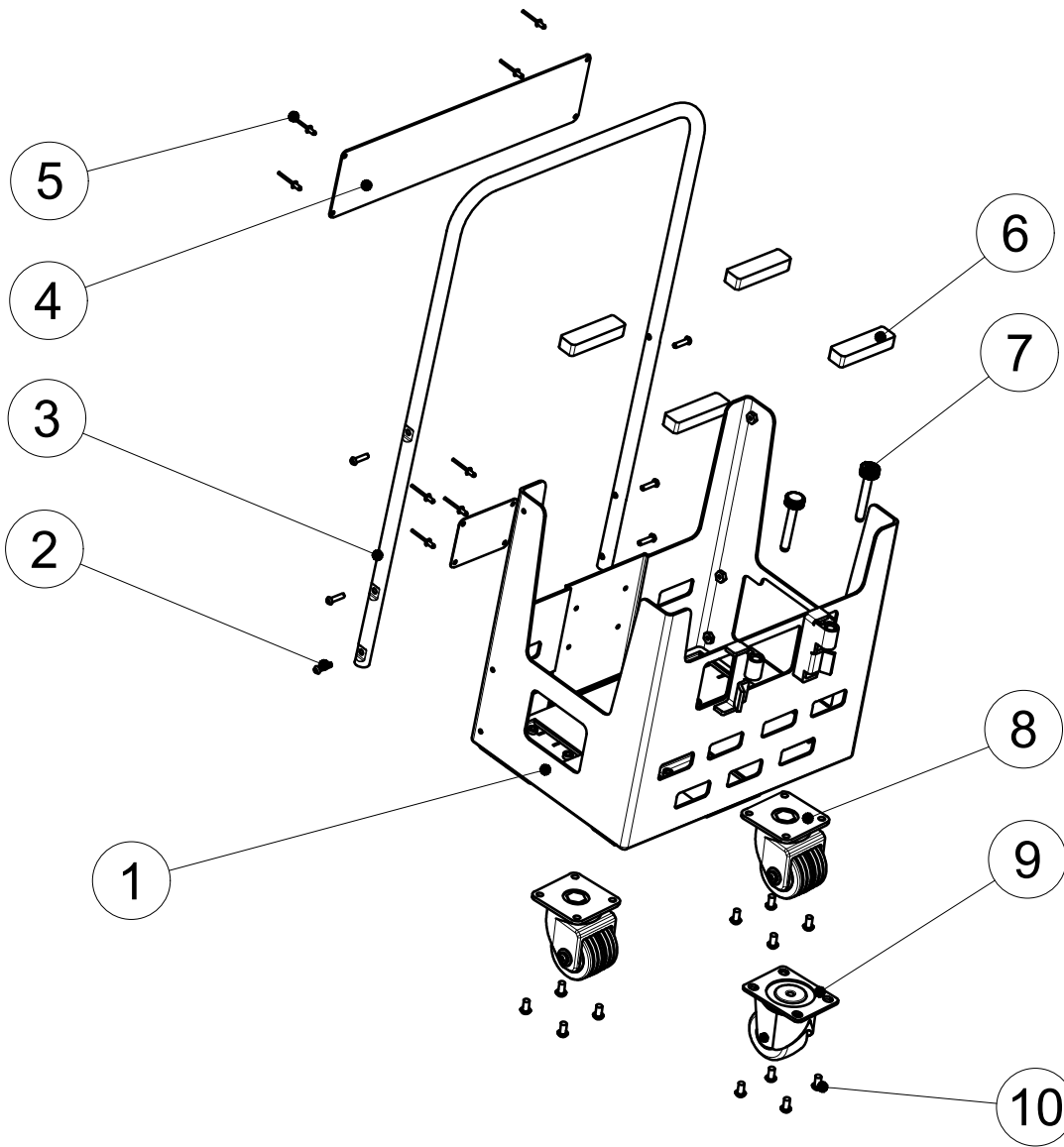


33	134.0019.0	SQUEEGEE, NITRILE MO0694	2	
32	134.0306.0	WASHER, M6 FLT SS DINI25 MS0256	2	
31	134.0326.0	SCREW M8-1.25 X 30.0MM BTNHCS SS ISO7380 MS0912	4	
30	134.0379.0	SUPPORTING BRACKET15mm MM1528	2	
29	134.0001.0	PIVET DECK US0252	1	
28	134.0071.0	LABEL FOR GOUNDING UL CERTIFIED MPL034	1	
27	134.0045.1	WASHER, M5 SHPRF MS0238	2	
26	134.0161.0	NYLON STRIP 3.6*150MM MO0643	3	
25	134.0314.0	WASHER, M10 DSP SS MS0629	2	
24	134.0313.0	SCREW M10-1.5 X 20.0MM BTNHCS SS ISO7380 MS0853	2	
23	134.0310.0	SCREW M5-0.8 X15.0MM BTNHCS SS ISO7380 MS0713	4	
22	134.0414.0	SPACER OD15*ID6.5 MM1534	4	
21	134.0136.0	CLAMP, 5/8 DIA NYLON BLK MO0728	2	
20	134.0178.0	TRAY LATCH MM1464	1	
REF	PART NO	DESCRIPTION	QTY	REMARKS

REV	DESCRIPTION	ECN	REV BY	DATE
A	RELEASE FOR PRODUCTION (REV A)	-	周佳奇	04-12-2024

**DIMENSIONS ARE IN MM
TOLERANCES:**
.X ± 0.5
.XX ± 0.25
.XXX ± 0.025
∠ ± 0.1

DRAWN		NAME	DATE	 YM Cleaning Products Co., Ltd. No. 1 Han Hu Rd., Xixi, Liao Bu, City of Dong Guan	
CHECKED		TITLE:			
ENG APPR.		SUB-ASSEMBLY BRUSH HOUSING UA0635			
MFG APPR.					
Q.A.					
COMMENTS:		SCALE:	PART NO.	REV	
THE INFORMATION CONTAINED IN THIS DRAWING IS PROPRIETARY AND MAY CONTAIN TRADE SECRETS AND PATENTABLE SUBJECTS WHICH ARE THE EXCLUSIVE PROPERTY OF YM CLEANING PRODUCTIONS CO., LTD.		1:0.15	S.134.0163.0	A	
DO NOT SCALE DRAWING				SHEET 2 OF 2	

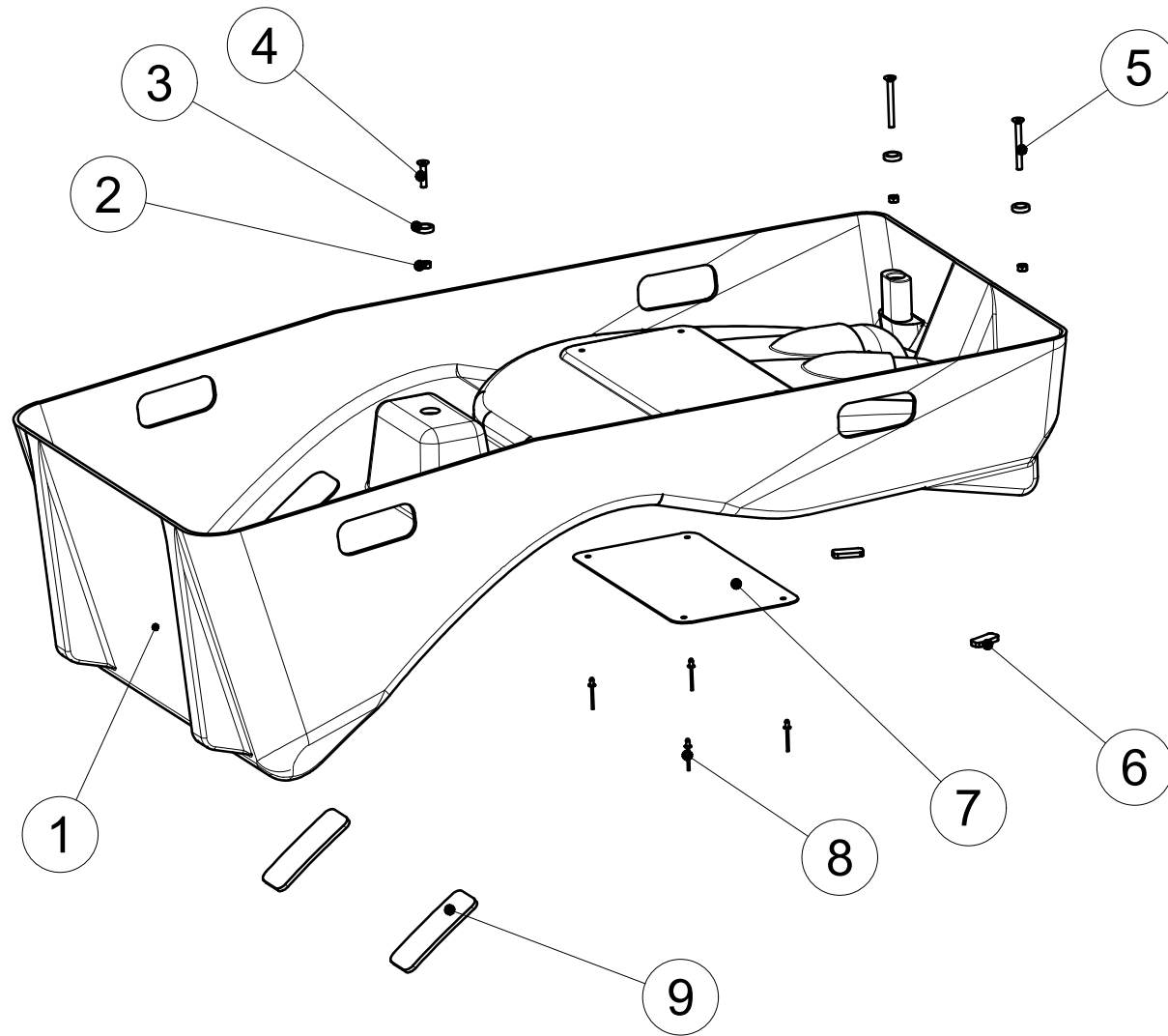


10	134.0418.0	SCREW M8-1.25 X 15.0MM BTNHCS SS ISO7380 MS0940	12	
9	134.0218.0	3" CASTERS MM1560	1	
8	134.0125.0	3" FRONT WHEEL MM1372	2	
7	134.0219.0	PIN, 12MM MM1561	2	
6	134.0213.0	RUBBER(BACK) MO0757	4	
5	134.0214.0	M5X10 RIVET MS0081	8	
4	134.0216.0	WARNING PLATE MM1556	1	
3	134.0215.0	TUBE, HANDLE MM1555	1	
2	134.0328.0	SCREW M6-1.0 X 25.0MM BTNHCS SS ISO7380 MS0884	6	
1	134.0200.0A	TROLLEY MM1553	1	
REF	PART NO	DESCRIPTION	QTY	REMARKS

NAME		DATE	YM Cleaning Products Co., Ltd.	
DRAWN 朱敏		08-07-2024	No. 1 Han Hu Rd., Xixi, Liao Bu, City of Dong Guan	
CHECKED			TITLE:	
ENG APPR.			TROLLEY ASSEMBLY , I-ESCALATE	
MFG APPR.			SCALE:	
Q.A.			1:1	
COMMENTS:		THE INFORMATION CONTAINED IN THIS DRAWING IS PROPRIETARY AND MAY CONTAIN TRADE SECRETS AND PATENTABLE SUBJECTS WHICH ARE THE EXCLUSIVE PROPERTY OF YM CLEANING PRODUCTIONS CO., LTD.		PART NO. S.134.0200.0 A
		DO NOT SCALE DRAWING		REV A
		SHEET 1 OF 1		

REV	DESCRIPTION	ECN	REV BY	DATE
A	RELEASE FOR PRODUCTION (REV A)	-	朱敏	08-29-2024

DIMENSIONS ARE IN MM
TOLERANCES:
.X ± 0.5
.XX ± 0.25
.XXX ± 0.025
∠ ± 0.1

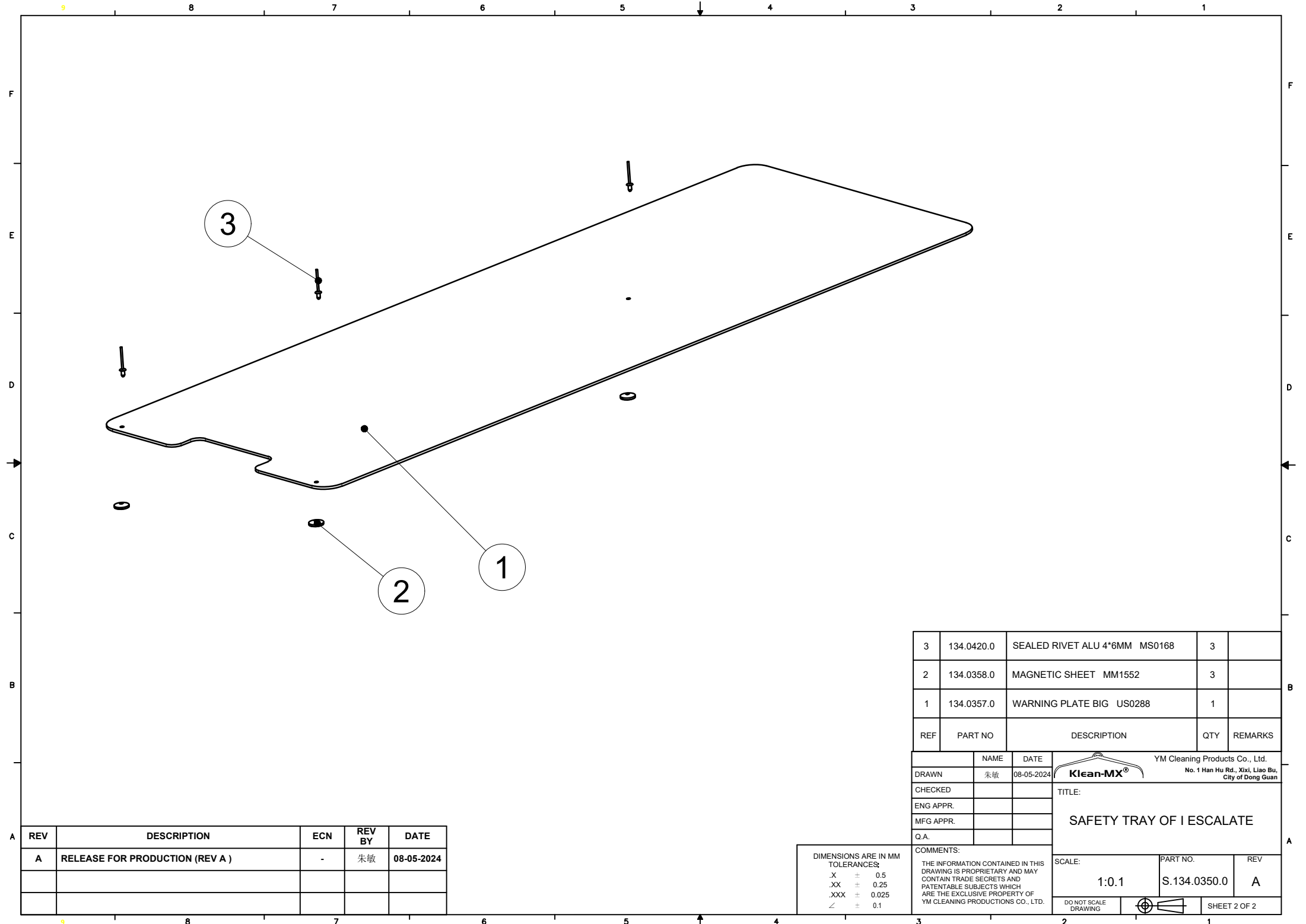


9	134.0367.0	RUBBER L,NBR MO0760	2	
8	134.0214.0	SEALED RIVET ALU 5*10MM MS0081	4	
7	134.0351.0	WARNING PLATE MM1551	1	
6	134.0366.0	RUBBER S, NBR MO0759	2	
5	134.0355.0	SCREW M5x60MM HEX MACHINE STAINLESS MS0938	2	
4	134.0356.0	SCREW M5x20MM HEX MACHINE STAINLESS MS0641	1	
3	134.0362.0	N52 STRONG MAGNET 20X5.0MM MM1564	3	
2	04.0048.0	NUT M5 NYLON STAINLESS MS0321	3	
1	134.0350.0	YELLOW SAFETY TRAY OF I ESCALATE MO0752	1	
REF	PART NO	DESCRIPTION	QTY	REMARKS

NAME		DATE	YM Cleaning Products Co., Ltd.	
DRAWN		朱敏	08-05-2024	No. 1 Han Hu Rd., Xixi, Liao Bu, City of Dong Guan
CHECKED			TITLE:	
ENG APPR.			SAFETY TRAY OF I ESCALATE	
MFG APPR.				
Q.A.				
COMMENTS:			SCALE:	PART NO.
THE INFORMATION CONTAINED IN THIS DRAWING IS PROPRIETARY AND MAY CONTAIN TRADE SECRETS AND PATENTABLE SUBJECTS WHICH ARE THE EXCLUSIVE PROPERTY OF YM CLEANING PRODUCTIONS CO., LTD.			1:0.1	S.134.0350.0
			DO NOT SCALE DRAWING	REV
				A
				SHEET 1 OF 2

REV	DESCRIPTION	ECN	REV BY	DATE
A	RELEASE FOR PRODUCTION (REV A)	-	朱敏	09-13-2024

DIMENSIONS ARE IN MM
TOLERANCES:
.X ± 0.5
.XX ± 0.25
.XXX ± 0.025
∠ ± 0.1

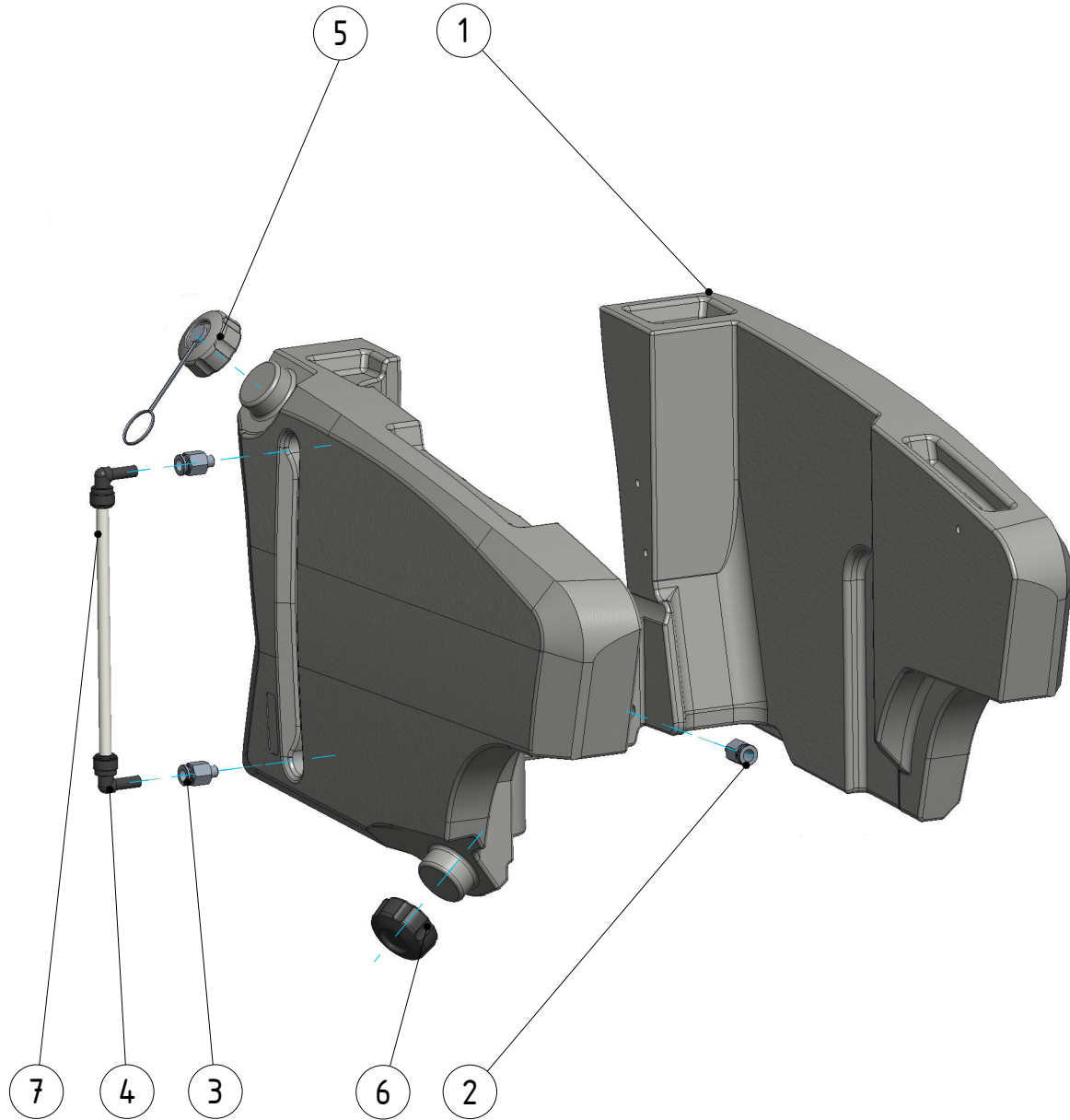


REV	DESCRIPTION	ECN	REV BY	DATE
A	RELEASE FOR PRODUCTION (REV A)	-	朱敏	08-05-2024

DIMENSIONS ARE IN MM
TOLERANCES:
.X ± 0.5
.XX ± 0.25
.XXX ± 0.025
∠ ± 0.1

3	134.0420.0	SEALED RIVET ALU 4*6MM MS0168	3	
2	134.0358.0	MAGNETIC SHEET MM1552	3	
1	134.0357.0	WARNING PLATE BIG US0288	1	
REF	PART NO	DESCRIPTION	QTY	REMARKS

DRAWN	NAME 朱敏	DATE 08-05-2024	YM Cleaning Products Co., Ltd. No. 1 Han Hu Rd., Xixi, Liao Bu, City of Dong Guan		
CHECKED			 TITLE: SAFETY TRAY OF I ESCALATE		
ENG APPR.					
MFG APPR.					
Q.A.					
COMMENTS: THE INFORMATION CONTAINED IN THIS DRAWING IS PROPRIETARY AND MAY CONTAIN TRADE SECRETS AND PATENTABLE SUBJECTS WHICH ARE THE EXCLUSIVE PROPERTY OF YM CLEANING PRODUCTIONS CO., LTD.			SCALE: 1:0.1	PART NO. S.134.0350.0	REV A
DO NOT SCALE DRAWING					SHEET 2 OF 2



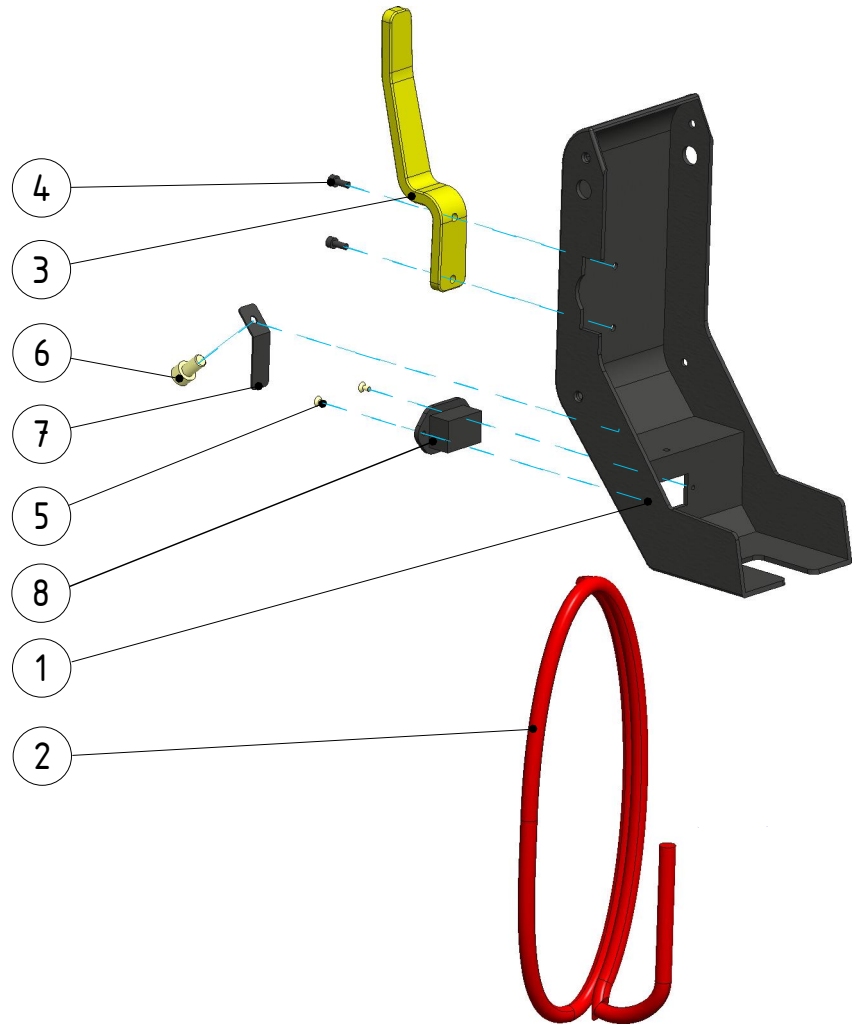
7	134.0089.0	HOSE, OD10*ID6.5MM*235mm UA0593	1	
6	FA0578	DRAIN CAP ASM	1	
5	FA0571	FILL CAP SOLUTION TANK ASM	1	
4	134.0085.0	QUICK CONNECTOR, PISCO PL3/8 MM1392	2	
3	134.0084.0	QUICK CONNECTOR, PISCO POC3/8-02 MM1458	2	
2	134.0119.0	QUICK CONNECTOR, PISCO PC3/8-03 MM1427	1	
1	134.0082.357	SOLUTION TANK UR0199	1	
REF	PART NO	DESCRIPTION	QTY	REMARKS

REV	DESCRIPTION	ECN	REV BY	DATE
A	RELEASE FOR PRODUCTION (REV A)	-	周佳奇	04-10-2024

**DIMENSIONS ARE IN MM
TOLERANCES:**
.X ± 0.5
.XX ± 0.25
.XXX ± 0.025
∠ ± 0.1

NAME		DATE	YM Cleaning Products Co., Ltd.	
DRAWN		周佳奇	04-10-2024	No. 1 Han Hu Rd., Xixi, Liao Bu, City of Dong Guan
CHECKED			TITLE:	
ENG APPR.			SOLUTION TANK ASM	
MFG APPR.				
Q.A.				
COMMENTS:			SCALE:	PART NO.
THE INFORMATION CONTAINED IN THIS DRAWING IS PROPRIETARY AND MAY CONTAIN TRADE SECRETS AND PATENTABLE SUBJECTS WHICH ARE THE EXCLUSIVE PROPERTY OF YM CLEANING PRODUCTIONS CO., LTD.			1:0.18	UA0656
			DO NOT SCALE DRAWING	SHEET 1 OF 1


F
E
D
C
B
A



REV	DESCRIPTION	ECN	REV BY	DATE
A	RELEASE FOR PRODUCTION (REV A)	-	周佳奇	04-13-2024

**DIMENSIONS ARE IN MM
TOLERANCES:**
.X ± 0.5
.XX ± 0.25
.XXX ± 0.025
∠ ± 0.1

8	134.0044.4	SOCKET ME0340	1	
7	134.0044.3	90° LOCK BLOCK MM1508	1	
6	134.0044.2	SCREW M5-0.8 MS0865	1	
5	134.0044.1	SCREW M3-0.5 X 6.0MM BTNHCS SS ISO7380 MS0841	2	
4	134.0319.0	SCREW SOCKET CAP M5-0.8 X 12.0MM SS MS0768	2	
3	134.0047.0	HOOK, MACHINED MM1529	1	
2	134.0066.0	ELECTRICAL CORD, 230V ME0321	1	
1	134.0044.0	COVER, ELECTRIC CORD MM1507	1	
REF	PART NO	DESCRIPTION	QTY	REMARKS

NAME	DATE	YM Cleaning Products Co., Ltd.		
DRAWN 周佳奇	04-13-2024	 No. 1 Han Hu Rd., Xixi, Liao Bu, City of Dong Guan		
CHECKED		TITLE:		
ENG APPR.		POWER CORD HOLDER,ASM		
MFG APPR.				
Q.A.				
COMMENTS:		SCALE:	PART NO.	REV
THE INFORMATION CONTAINED IN THIS DRAWING IS PROPRIETARY AND MAY CONTAIN TRADE SECRETS AND PATENTABLE SUBJECTS WHICH ARE THE EXCLUSIVE PROPERTY OF YM CLEANING PRODUCTIONS CO., LTD.		1:0.22	UA0664	A
		DO NOT SCALE DRAWING	SHEET 2 OF 2	