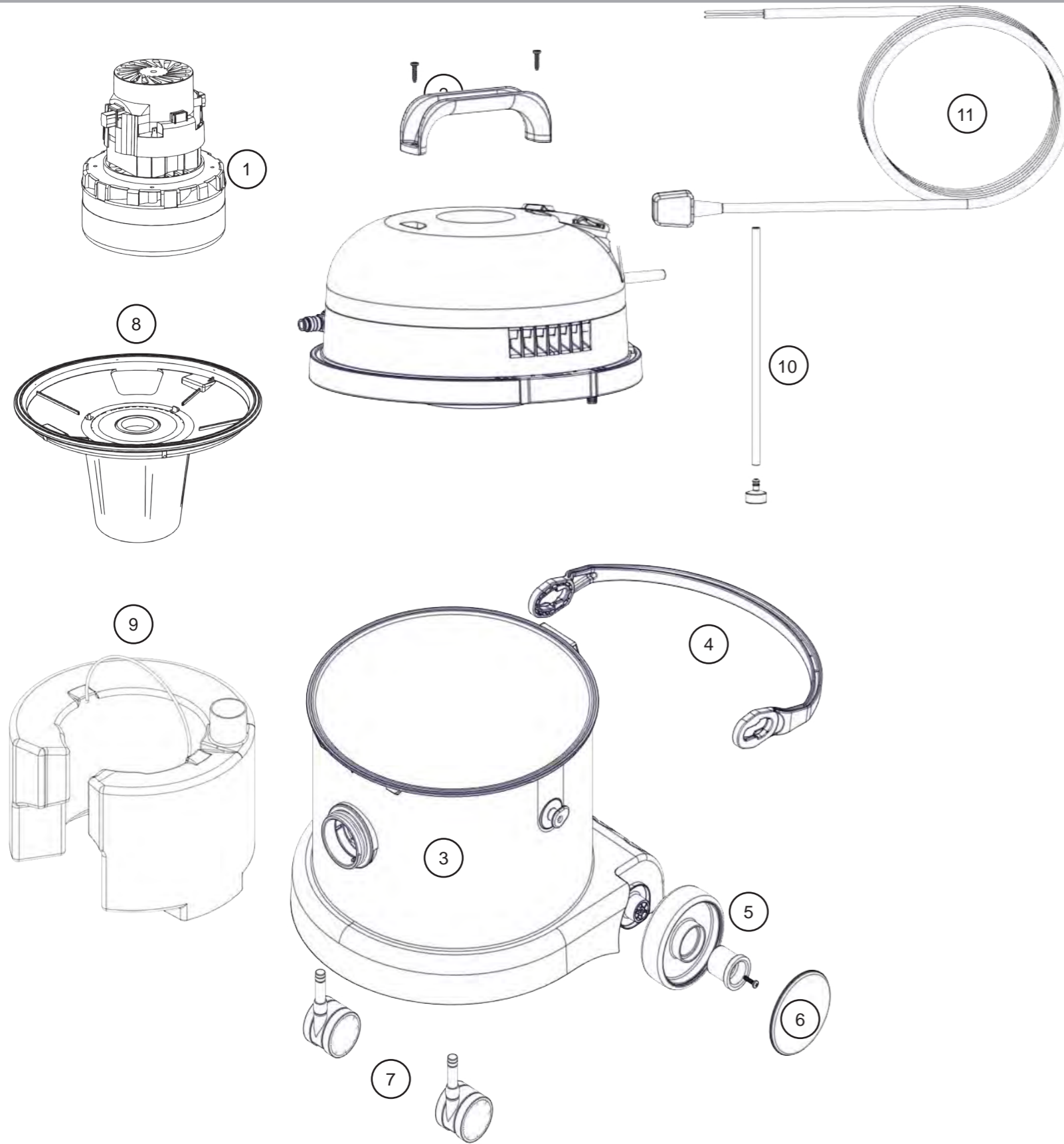
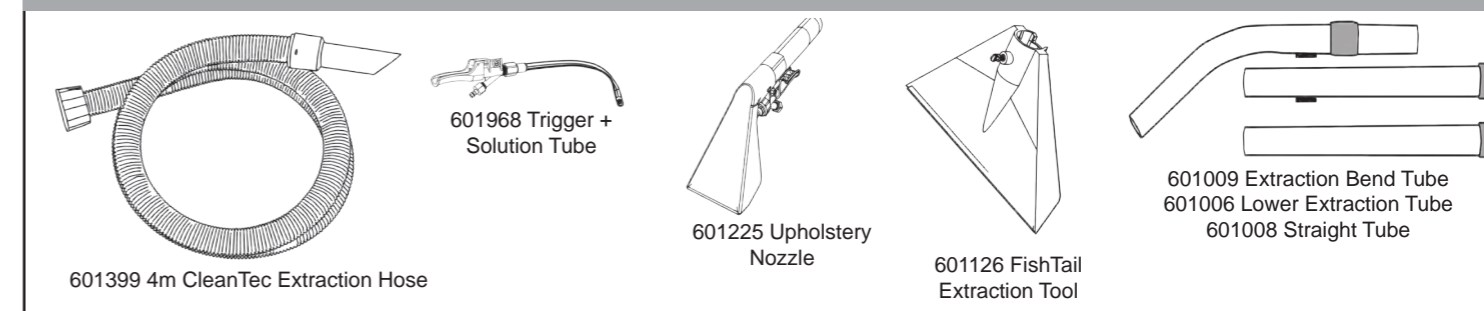


# Exploded Spare Parts CT370



|    |  |        |
|----|--|--------|
| 1  | 230V 2 STAGE D.I BYPASS ACUSTEK MOTOR (BL21104T)(MARKED 230V)TCO(REF119847-00) | 205443 |
| 2  | HANDLE (EXTRA-VAC)   | 206451 |
|    | NO8.1 INCH LG.POZI-PAN.SCREW.STAINLESS STEEL.PLASTITE                          | 219369 |
| 3  | 370 BLUE DRUM CONFIGURATION 2 ASSEMBLY   | 908663 |
| 4  | 370 DRUM HANDLE  | 907190 |
| 5  | WHEEL HUB FOR 2 SHOT WHEEL   | 227868 |
|    | HENRY WHEEL 2 SHOT MOULDING  | 227640 |
|    | NO8.5/8 INCH LG.POZI-PAN.SCREW.Z/PL.PLASTITE                                   | 219105 |
| 6  | TRIM FOR 2 SHOT WHEEL (BLACK)  | 227638 |
| 7  | 50MM TWIN WHEEL CASTOR WITH PU TYRE (REF HF0380)                               | 204111 |
| 8  | CT/GVE FLOAT CAGE ASSEMBLY   | 502036 |
| 9  | NVE 3 FLUID CONTAINER ASSY   | 227065 |
| 10 | LOW SOL INLET HOSE (260MM) & FILTER ASSY CT 370/375                            | 303018 |
| 11 | 10 METRE X 1.0MM X 2 CORE YELLOW CABLE WITH UK PLUG                            | 911552 |

## Genuine Accessories (607147 Kit A40A)



601399 4m CleanTec Extraction Hose

601968 Trigger + Solution Tube

601225 Upholstery Nozzle

601126 FishTail Extraction Tool

601009 Extraction Bend Tube  
601006 Lower Extraction Tube  
601008 Straight Tube

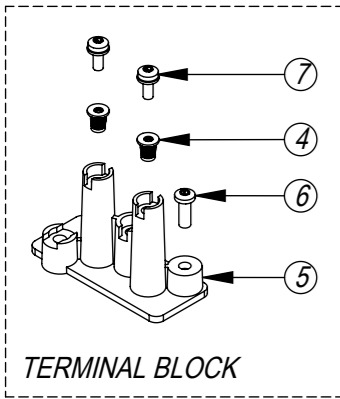
# Numatic International Spare Parts

Model No: HEAD STYLE 22 (CT 370.470)

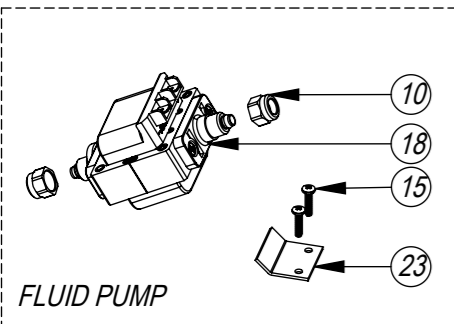
Internal Code: 911831

DEV DRAWING: DRW-28136 ISS:A05

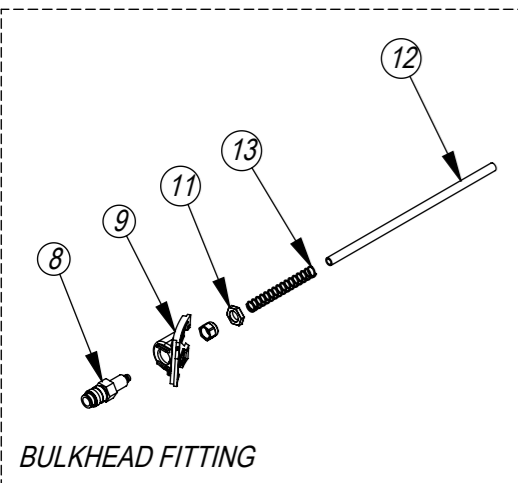
NB: FOR WIRING SEE DRAWING: WD-0238



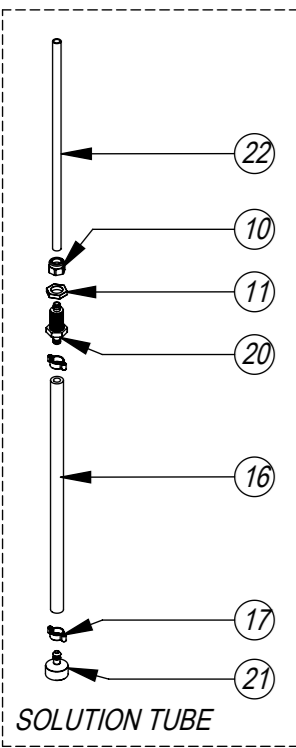
TERMINAL BLOCK



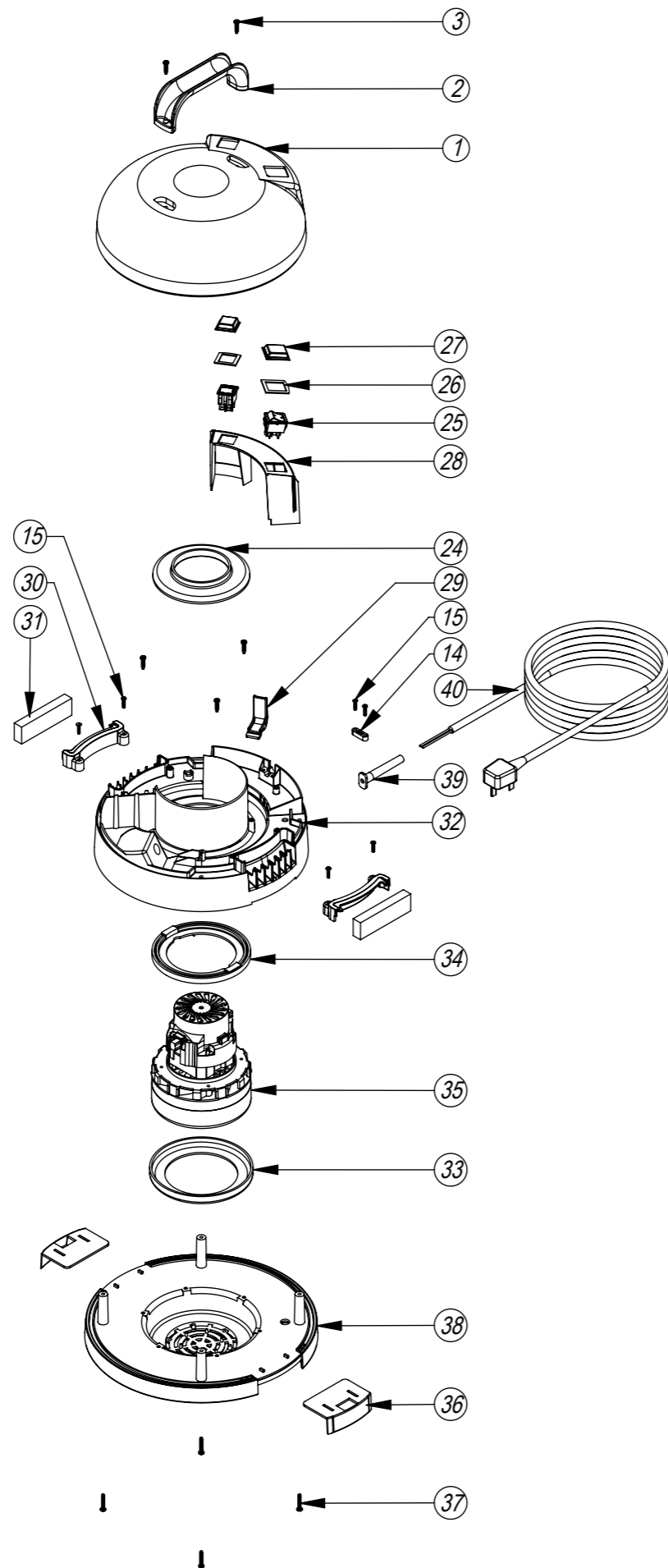
FLUID PUMP



BULKHEAD FITTING



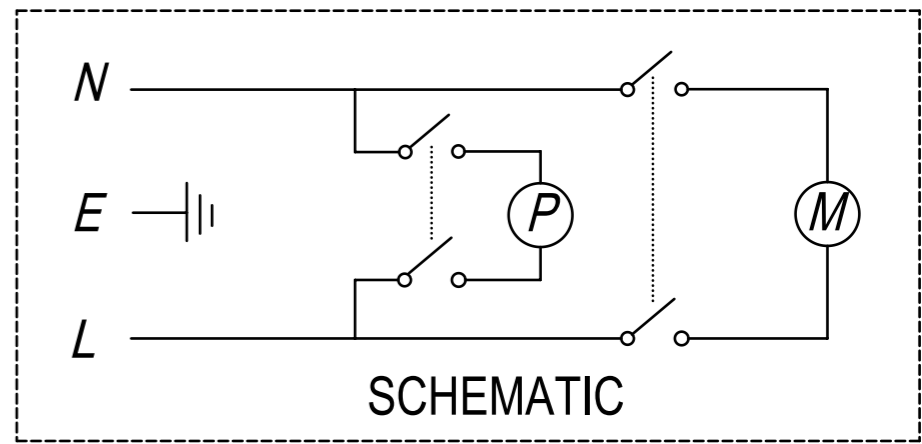
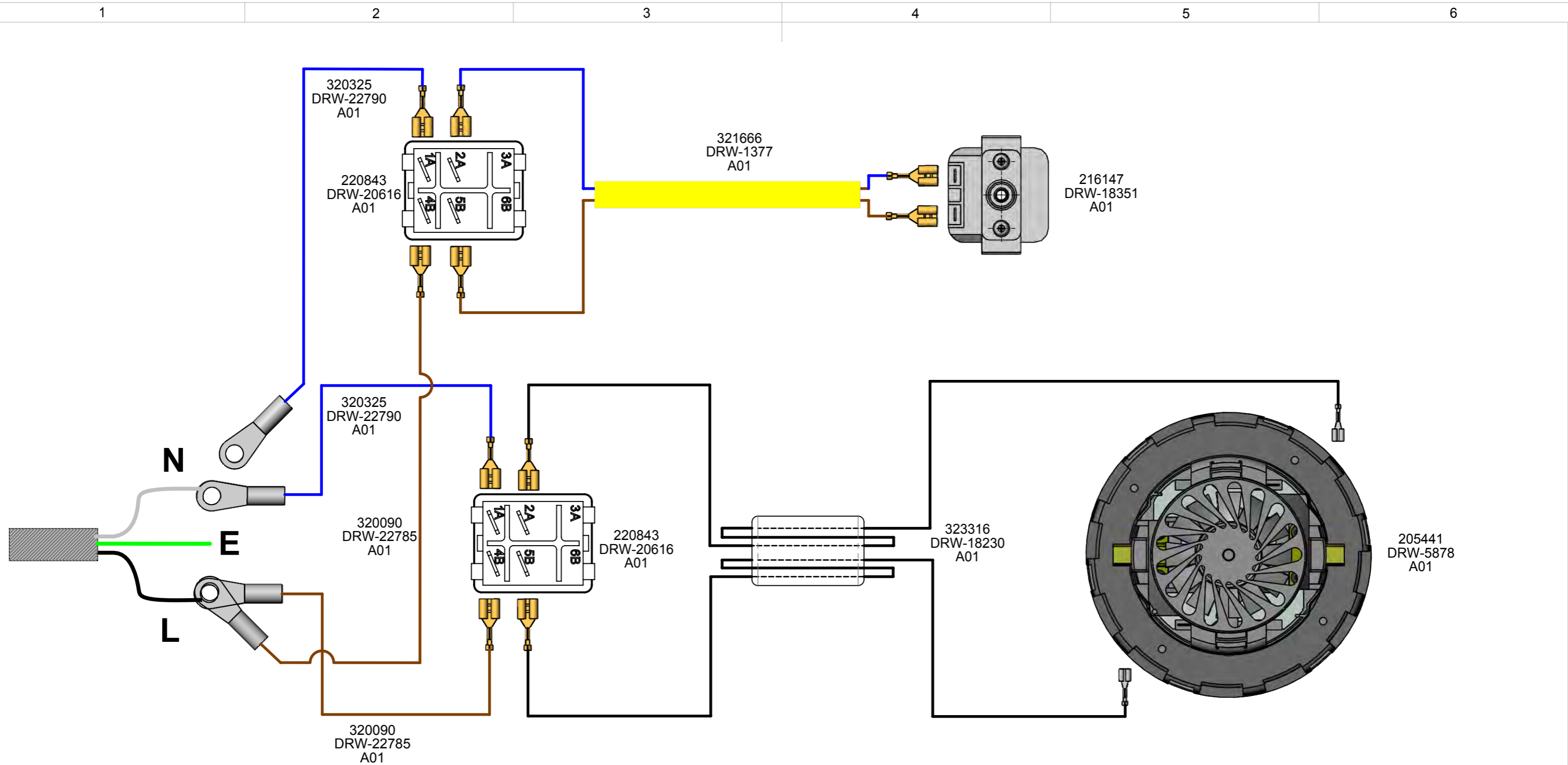
SOLUTION TUBE



# Numatic International Spare Parts

Model No: HEAD STYLE 22 (CT 370.470)

| ITEM NO. | PART NUMBER | DESCRIPTION  | QTY.  | COMMENTS:         |
|----------|-------------|--|-------|-------------------|
| 1        | 227920      | 12 INCH WET VAC COVER (2 SWITCH)                                   | 1     |                   |
| 2        | 206451      | HANDLE   | 1     |                   |
| 3        | 219041      | No8 X 3/4 INCH LONG POZI PAN SCREW                                 | 5     |                   |
| 4        | 219009      | M4 BRASS TAPPEX INSERT   | 2     |                   |
| 5        | 220563      | TERMINAL BLOCK MOULDING  | 1     |                   |
| 6        | 291152      | NO8.1/2 INCH LG.T20.SCREW.Z/PL.PLASTITE                            | 1     |                   |
| 7        | 291151      | M4 X 10MM LONG T20 SEMS SCREW Z/PL - PRODUCT CODE 8.8 - TX20 HEAD  | 2     |                   |
| 8        | 216296      | QUICK RELEASE BULK HEAD FITTING                                    | 1     |                   |
| 9        | 270167      | QUICK RELEASE MOUNTING BRACKET                                     | 1     |                   |
| 10       | 903145      | M12X1 TUBE NUT.NICKEL PLATED (KCL0027-N)                           | 4     |                   |
| 11       | 219337      | LOCKNUT  | 2     |                   |
| 12       | 227814      | 215MM LONG SOLUTION TUBE   | 1     |                   |
| 13       | 219327      | 80MM LG COMPRESSION SPRING   | 1     |                   |
| 14       | 227008      | BLACK CABLE CLAMP  | 1     |                   |
| 15       | 219107      | NO6.5/8 INCH LG.POZI-PAN.SCREW.Z/PL.PLASTITE                       | 8     |                   |
| 16       | 213015      | BRAIDED PVC HOSE 6.3MM I/D X 11.5MM O/D                            | 0.26m | 370 HEAD VARIANTS |
|          |             |  | 0.42m | 470 HEAD VARIANTS |
| 17       | 219319      | O CLIP 11-13 MM  | 2     |                   |
| 18       | 216147      | PUMP SMALL BORE 220/240V 50HZ                                      | 1     |                   |
| 19       | 206208      | SEALING WASHER   | 1     |                   |
| 20       | 219380      | BARBED TUBE FITTING  | 1     |                   |
| 21       | 502040      | GAUZE FILTER ASSEMBLY  | 1     |                   |
| 22       | 227995      | 235MM LONG SOLUTION TUBE   | 1     |                   |
| 23       | 303022      | PUMP FIXING BRACKET  | 1     |                   |
| 24       | 227926      | AIR SEPERATOR  | 1     |                   |
| 25       | 220843      | BLUE ROCKER SWITCH   | 2     |                   |
| 26       | 291015      | SWITCH GASKET - WV/CT  | 2     |                   |
| 27       | 206573      | SWITCH COVER (PLUG HANDLE)   | 2     |                   |
| 28       | 227927      | SWITCH MOUNTING BRACKET  | 1     |                   |
| 29       | 227019      | CABLE HOOK   | 1     |                   |
| 30       | 237184      | SPLASH PAD RETAINER - WV/CT  | 2     |                   |
| 31       | 291014      | SPLASH PAD - WV/CT   | 2     |                   |
| 32       | 325506      | CT TOP MOTOR HOUSING (PRINTED GREY NUMATIC)                        | 1     |                   |
| 33       | 202031      | MOTOR BOTTOM GASKET  | 1     |                   |
| 34       | 227925      | TOP MOTOR GASKET (AMETEK BYPASS MOTOR)                             | 1     |                   |
| 35       | 205443      | 230V 2 STAGE D.I BYPASS ACUSTEK MOTOR (BL21104T) (MARKED 230V) TCO | 1     |                   |
| 36       | 227115      | TOGGLE   | 2     |                   |
| 37       | 219369      | No8 X 1 INCH LONG POZI PAN STAINLESS STEEL PLASTITE SCREW          | 4     |                   |
| 38       | 227922      | CT 12 INCH BOTTOM MOTOR HOUSING. DRILLED                           | 1     |                   |
| 39       | 220923      | STRESS RELIEF  | 1     |                   |
| 40       | 236033      | 10.0M X 1.00MM X 2 CORE CABLE (UK PLUG)                            | 1     |                   |



Wire Colours: BK-BLACK, BL-BLUE, BR-BROWN, RD-RED, GR-GREEN, GY-GREEN/YELLOW, OR-ORANGE, SL-SLATE, YL-YELLOW

|   |  |                           |  |                            |                    |                      |                         |  |  |                 |                  |
|---|--|---------------------------|--|----------------------------|--------------------|----------------------|-------------------------|--|--|-----------------|------------------|
| Qualification of alternative supplier components upon submission of appropriate data sheets and approvals documentation | ASSEMBLY TO BE RoHS COMPLIANT  | DIMENSIONS IN MILLIMETERS | TOLERANCES +10 / -5 mm UNLESS OTHERWISE STATED | PRINT SIZE A3 NOT TO SCALE | Class: CLASS I     | Cable Eye Plate: --- | Special Approvals Req.: | <b>Numatic International Limited</b>   | TITLE: WIRING DIAGRAM.VACUUM.1S.3W.120.2SBPS.1100.1.12.HRD |                 |                  |
| CHANGE DETAIL:  | DRAWING REDRAWN IN SOLIDWORKS & UPDATED TO LATEST SPEC REF PROJ-2232 |                           |  | Internal Code: PRO         | DRAWN: Andy Martin | APPROVED: MMC        | DATE: 20/12/2018        | THIS DRAWING IS COPYRIGHT AND IS THE PROPERTY OF NUMATIC INTERNATIONAL LTD. AND MUST NOT BE USED WITHOUT THEIR KNOWLEDGE NOR COMMUNICATED TO ANY PERSON OR COMPANY | ITEM No. 123250  | DRG No. WD-0271 | REVISION No. A07 |